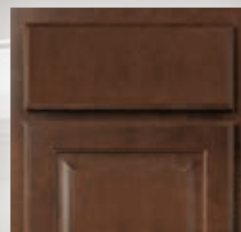


HAMPTON BAY®

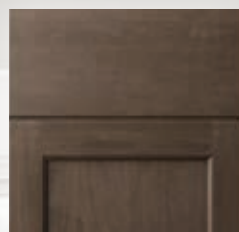
Kitchen Cabinetry Program Notebook



Shown in Shaker Brindle



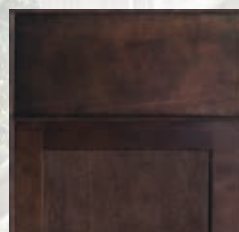
HAMPTON
Cognac



SHAKER
Brindle



HAMPTON
Natural Hickory



SHAKER
Java



HAMPTON
Medium Oak



SHAKER
Satin White (RTF)



HAMPTON
Satin White (RTF)



SHAKER
Dove Gray (RTF)



UNFINISHED

Table of Contents

| | |
|---|---------|
| Vendor Information | 2 |
| Product Specifications | 3 - 4 |
| Door Styles and Finishes | 5 |
| Model Number Guide | 6 |
| Wall Cabinets | 7 - 9 |
| Base Cabinets | 10 - 12 |
| Pantry Cabinets and Oven Cabinets | 13 - 14 |
| Accessories | 14 - 18 |
| Design and Layout Ideas | 19 - 21 |
| Care and Cleaning, Wood Characteristics | 22 |
| Order Processing and RTV Procedures | 22 - 23 |
| Warranty Details | 23 |

Hampton Bay® Kitchen Programs

1. In-Stock – Take cabinets home today

- Essential cabinet selection for most kitchens
- Buy 10 cabinets, save 10%
- Finish availability varies by store

2. Special Order – Ships to the store in 2 weeks

- Expanded cabinet selection, ships free to store with 5 cabinet minimum
- Buy 10 cabinets, save 10%
- All door styles and finishes available

3. HomeDepot.com

- Expanded cabinet selection, ships next day, free delivery to the store, home or jobsite
- Buy 10 cabinets, save 10%
- All styles and finishes available

4. PRO Program – Ships direct to the home or jobsite within 2-3 weeks

- Includes all stock and Special Order cabinets and accessories
- Volume discounts available at 75+ cabinet and 150+ cabinets
- All door styles and finishes available



2020 Catalogs

When designing with the Hampton Bay offering, use the below listed 2020 catalogs:

HBK_SK: In-Stock Pick List for all Finished and Unfinished Cabinetry

HBK_SO: Special Order for all Finished and Unfinished Cabinetry

SKU Numbers

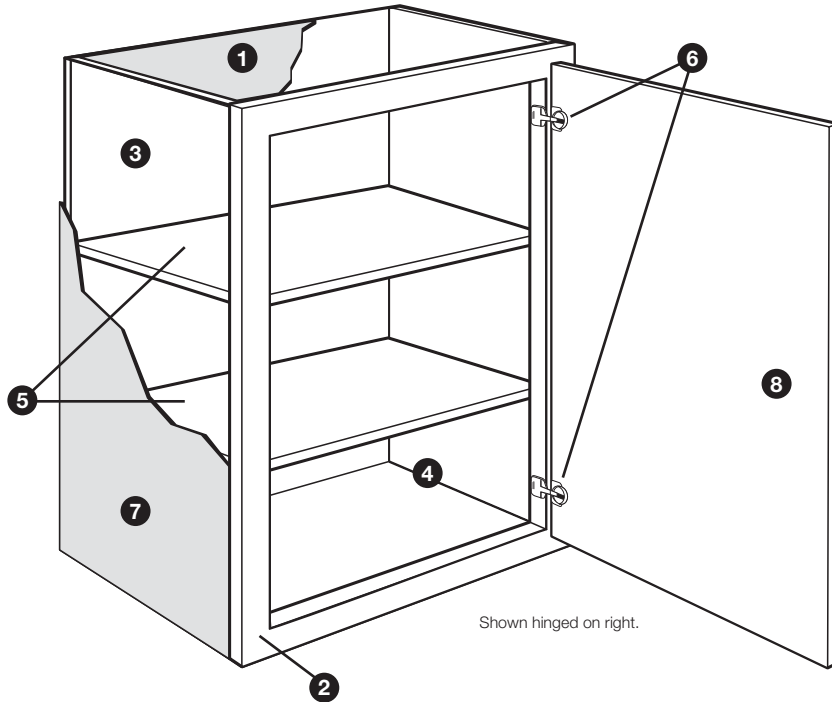
- SKU numbers listed per model number in the Program Notebook refer to the 2020 Special Order catalog (HBK_SO) SKU numbers.
- Stock SKU numbers are not listed in the Program Notebook. Items that are available only in the 2020 Stock catalog (HBK_SK) are noted as "In-Stock ONLY".
- Online SKU numbers are not listed in the Program Notebook and should be searched for by using the model number.

Vendor Information

| | | | |
|---------------------------------|-------------------------------|---------------------------------------|--|
| Manufacturer: | American Woodmark Corporation | Customer Care Service Hours: | Monday through Friday 8:00 am - 7:00 pm EST |
| In-Stock Vendor #: | 71203 | | |
| Special Order Vendor #: | 60071203 | Home Depot Customer Support #: | (877) 527-0313 |
| Pro Program Vendor #: | 60081766 | Hampton Bay Customer Care #: | (888) 578-4009 |
| Delivery Fee Applicable: | NONE | Order Processing Fax #: | (714) 449-2222 |
| Visit us at: | www.hamptonbaykitchens.com | Customer Care Email: | homeproducts_CC@woodmark.com |

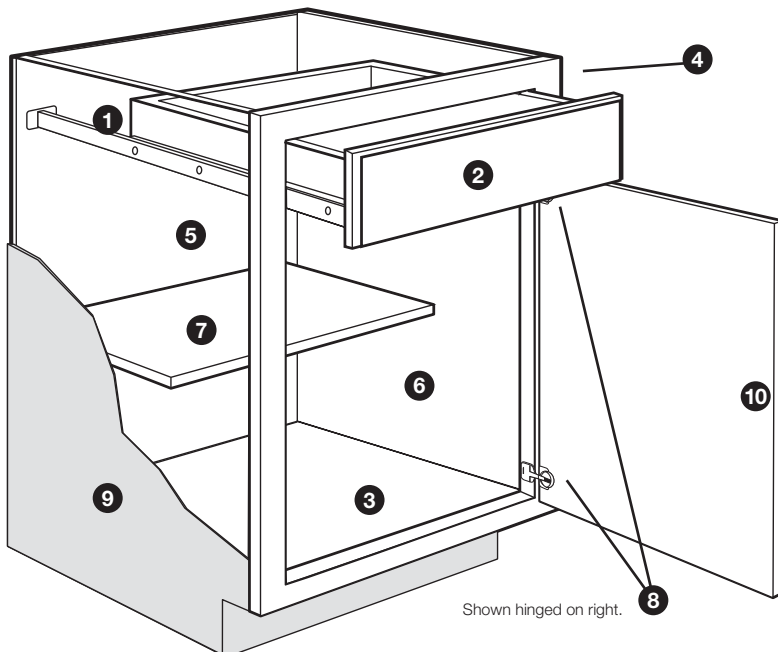
Hampton Bay is a division of the American Woodmark Corporation.

Wall Cabinets



- 1 Top/Bottom Panels:** 3/8" thick engineered wood fully encapsulated in the face frame, back and side panels.
- 2 Face Frame:** Pocket screw construction with 3/4" thick, 1 1/2" wide material.
- 3 Back Panel:** 3/8" thick engineered wood fully encapsulated into top and bottom panels for strength.
- 4 Interior:** Natural maple laminate finish.
- 5 Full-Depth Shelf:** 3/4" thick engineered wood with metal shelf pins.
- 6 Hinges:** Fully concealed and adjustable.
- 7 End Panels:**
Finished Cabinetry – 1/2" thick engineered wood with laminated exterior to match cabinet finish.
Unfinished Cabinetry – 1/2" thick engineered wood with raw exterior.
- 8 Door:** Single-door cabinets are hinged left and can be reversed in the field. No center stiles on double-door cabinets to allow full access.

Base Cabinets



- 1 Drawer Glides:**
Finished Cabinetry – Ball-Bearing
Unfinished Cabinetry – Epoxy
- 2 Drawer Box:** Hardwood 4-sided drawer box with fully encapsulated bottom panel.
- 3 Bottom Panel:** 3/8" engineered wood fully encapsulated in the face frame, back and side panels.
- 4 Face Frame:** Pocket screw construction with 3/4" thick, 1 1/2" wide material.
- 5 Back Panel:** 3/8" thick engineered wood. Backs of sink base cabinets must be cut for plumbing access.
- 6 Interior:** Natural maple laminate finish.
- 7 Half-Depth Shelf:** 3/4" thick engineered wood.
- 8 Hinges:** Fully concealed and adjustable.
- 9 End Panels:**
Finished Cabinetry – 1/2" thick engineered wood with laminated exterior to match cabinet finish.
Unfinished Cabinetry – 1/2" thick engineered wood with raw exterior.
- 10 Door:** Single-door cabinets are hinged left and can be reversed in the field. No center stiles on double-door cabinets to allow full access.

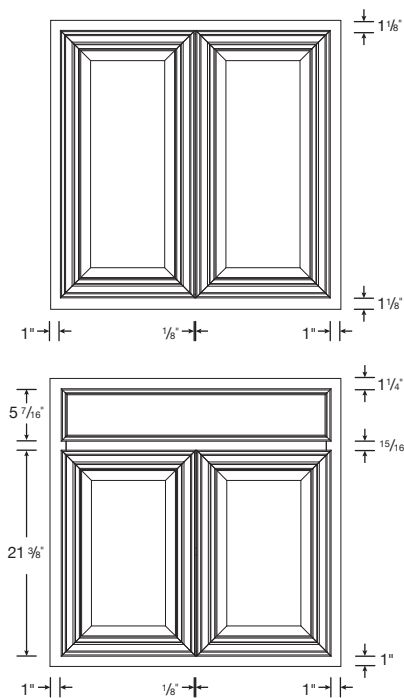
Finished Cabinetry

Unfinished Cabinetry

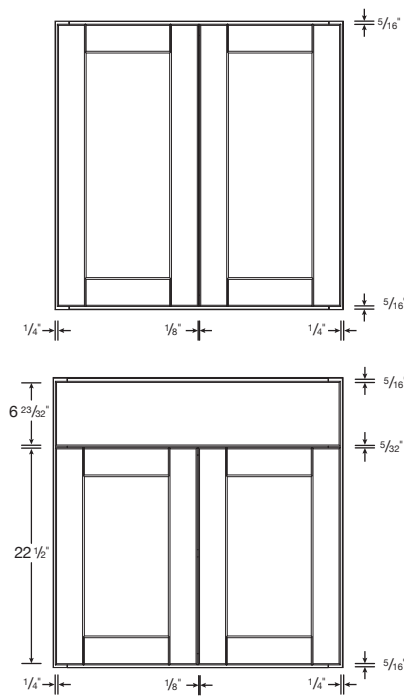


Product Specifications

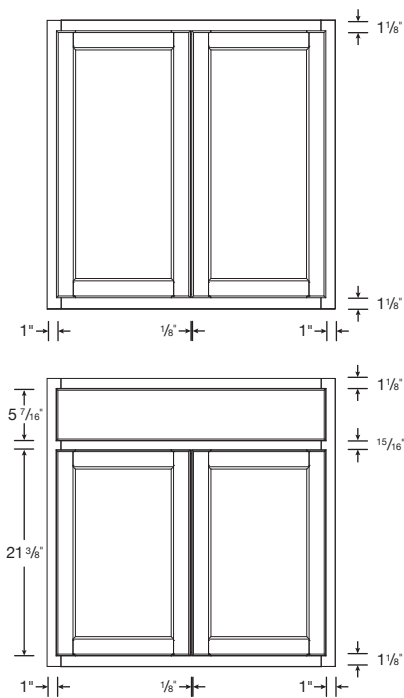
Traditional Overlay



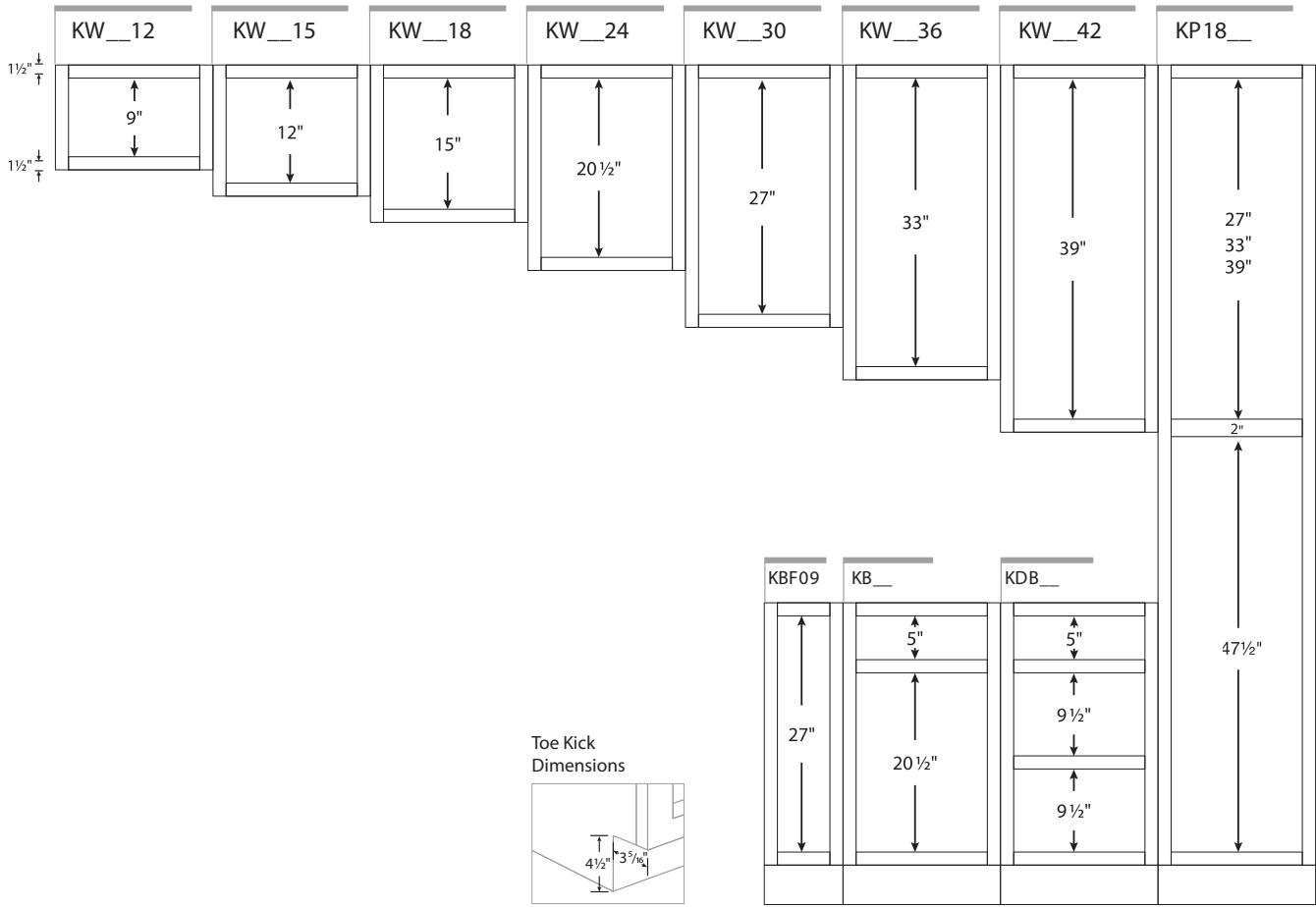
Full Overlay



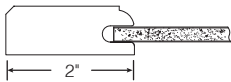
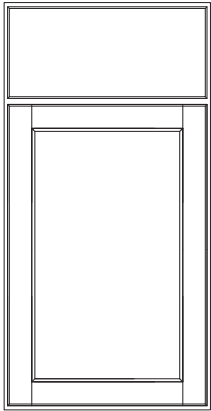
Unfinished



Frame Opening Dimensions



Shaker



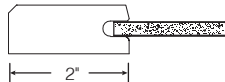
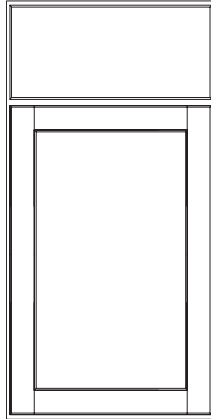
Finishes

Brindle (BDL)

Details

Mortise and Tenon Construction
Full Overlay
Recessed Panel

Shaker



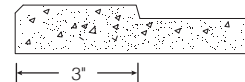
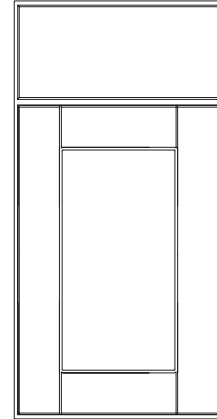
Finishes

Java (SJM)

Details

Mortise and Tenon Construction
Full Overlay
Recessed Panel

Shaker (RTF)



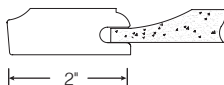
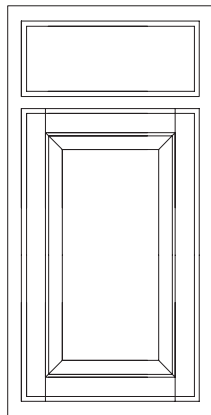
Finishes

Satin White RTF (SSW)
Dove Gray (SDV)

Details

Routed MDF
Full Overlay
Recessed Panel

Hampton



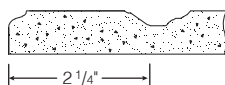
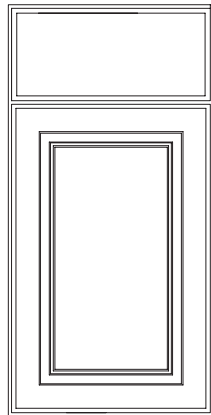
Finishes

Cognac (COG)
Natural Hickory (NHK)
Medium Oak (MO)

Details

Mortise and Tenon Construction
Traditional Overlay
Raised Panel

Hampton (RTF)



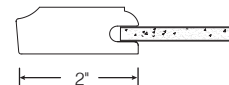
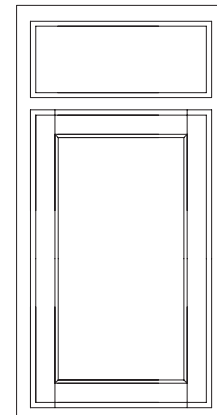
Finish

Satin White RTF (SW)

Details

Routed MDF
Full Overlay
Raised Panel

Unfinished



Finish

Unfinished (UF)

Details

Mortise and Tenon Construction
Traditional Overlay
Recessed Panel
Ready to Stain or Paint

Finished and Unfinished Cabinetry

KW1230-COG

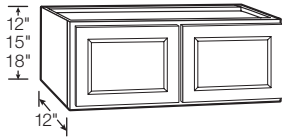
| | | | | |
|---------|------------------------------|----------------|-----------------|-----------------------|
| Kitchen | Types of Cabinet / Accessory | Width (inches) | Height (inches) | Door Style and Finish |
|---------|------------------------------|----------------|-----------------|-----------------------|

| TYPES OF CABINETS | | TYPES OF ACCESSORIES | | DOOR STYLE AND FINISH | |
|-------------------|------------------------------------|----------------------|-----------------------------------|-----------------------|-------------------------|
| W | Wall/Wall Bridge Cabinet | AS | Wall/Base Veneer End Panel | COG | Hampton Cognac |
| WD | Corner Wall Cabinet | AIE | Island/Peninsula Veneer End Panel | NHK | Hampton Natural Hickory |
| WFC | Wall Flex Cabinet | AEP | Decorative Wall/Base End Panel | MO | Hampton Medium Oak |
| BF | Base Cabinet with Full Height Door | ADEP | Dishwasher End Panel | SW | Hampton Satin White RTF |
| B | Base Cabinet | AUP | Universal Panel | SJM | Shaker Java |
| DB | Drawer Base Cabinet | ADPK | Decorative Island Panel Kit | SDV | Shaker Dove Gray RTF |
| SB | Sink/Cooktop Base Cabinet | ADCP | Decorative Corner Post | SSW | Shaker Satin White RTF |
| CSB | Corner Sink Base Cabinet | AFS | Filler | BDL | Shaker Brindle |
| SBA | Accessible Sink Base Cabinet | ADRTA | Base/Pantry Pull-Out Drawer | UF | Unfinished |
| BBC | Blind Base Corner Cabinet | ATKX | Toe Kick Molding | | |
| BLS | Lazy Susan Corner Base Cabinet | AMTX | Shoe Trim Molding | | |
| P | Pantry Cabinet | AMSX | Scribe Molding | | |
| BW | Waste Bin Base Cabinet | AMC5X | Crown Molding - Traditional | | |
| WMS | Wall Flex Shelving | AMC4X | Crown Molding - Shaker | | |
| KAREP | Refrigerator End Panel | AOCMX | Outside Corner Molding | | |
| SBD | Apron Front Sink Base Cabinet | AMBSX | Base Molding | | |
| DV | Double Oven Cabinet | AMSQX | Square Edge Molding | | |
| VSF | Vanity Sink Base Cabinet | AMDEX | Decorative Edge Molding | | |
| VDB | Vanity Drawer Base | | | | |

NOTE: X at end denotes single pack through Special Order.

Wall Cabinets

12", 15" & 18" High Wall Bridge Cabinet

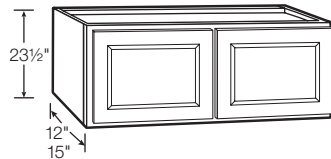


| Model | HAMPTON | | | | SHAKER | | | | UF |
|---------------|--------------|---------------|----------|------------|------------|------------|-------------|---------------|-----------------|
| | Cognac (COG) | Hickory (NHK) | Oak (MO) | White (SW) | Gray (SDV) | Java (SJM) | White (SSW) | Brindle (BDL) | Unfinished (UF) |
| KW3012 | 505886 | 536805 | 495192 | 489762 | 1002405396 | 329339 | 542087 | 1004302497 | 1002754238 |
| KW3612 | 505999 | 537564 | 496670 | 490568 | 1002405388 | 338350 | 546684 | 1004302509 | 1002754239 |
| KW3015 | 506116 | 537106 | 495725 | 489787 | 1002405395 | 331309 | 542149 | 1004302499 | 1002754266 |
| KW3615 | 508378 | 537596 | 496776 | 490610 | 1002405387 | 338421 | 603646 | 1004302511 | 1002754267 |
| KW3018 | 487348 | 537137 | 495827 | 489886 | 1002405394 | 332102 | 542159 | 1004302501 | 1002754268 |
| KW3618 | 441023 | 476980 | 460551 | 511384 | 1002405386 | 592492 | 645490 | 1004302512 | 1002754269 |

ALL DOOR STYLES:

- No shelf

24" High Wall Bridge Cabinet



| MODEL | HAMPTON | | | | SHAKER | | | | UF |
|-----------------|--------------|---------------|----------|------------|------------|------------|-------------|---------------|-----------------|
| | Cognac (COG) | Hickory (NHK) | Oak (MO) | White (SW) | Gray (SDV) | Java (SJM) | White (SSW) | Brindle (BDL) | Unfinished (UF) |
| KW3024 | 487439 | 490487 | 495880 | 492430 | 1002405393 | 333392 | 543987 | 1004302503 | 1002754270 |
| KW3624 | 487446 | 492293 | 496941 | 539785 | 1002405385 | 339863 | 603679 | 1004302515 | 1002754272 |
| KW302415 | 506347 | 537175 | 487915 | 489949 | 1002405392 | 332637 | 542542 | 1004302504 | 1002754271 |

ALL DOOR STYLES:

- KW302415 is 15" deep

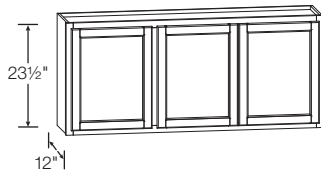
FINISHED DOOR STYLES:

- Includes one full-depth adjustable shelf

UNFINISHED DOOR STYLE:

- No shelf

24" High Wall Bridge Cabinet

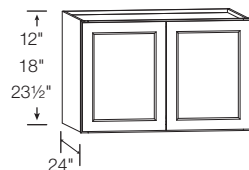


| MODEL | HAMPTON | | | | SHAKER | | | | UF |
|------------------|--------------|---------------|----------|------------|------------|------------|-------------|---------------|-----------------|
| | Cognac (COG) | Hickory (NHK) | Oak (MO) | White (SW) | Gray (SDV) | Java (SJM) | White (SSW) | Brindle (BDL) | Unfinished (UF) |
| KW5424-UF | N/A | | | | | | | | In-stock |

UNFINISHED DOOR STYLE:

- Includes one full-depth shelf

12", 18" & 24" High Wall Bridge Cabinet - 24" Deep



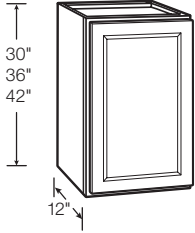
| MODEL | HAMPTON | | | | SHAKER | | | | UF |
|-----------------|--------------|---------------|------------|------------|------------|------------|-------------|---------------|-----------------|
| | Cognac (COG) | Hickory (NHK) | Oak (MO) | White (SW) | Gray (SDV) | Java (SJM) | White (SSW) | Brindle (BDL) | Unfinished (UF) |
| KW361224 | 1002405294 | 1002405301 | 1002405298 | 1002405310 | 1002405462 | 1002405304 | 1002405307 | 1004302510 | N/A |
| KW361824 | 1002405295 | 1002405302 | 1002405299 | 1002405311 | 1002405463 | 1002405305 | 1002405308 | 1004302514 | |
| KW362424 | 1002405296 | 1002405303 | 1002405300 | 1002405312 | 1002405464 | 1002405306 | 1002405309 | 1004302517 | |

FINISHED DOOR STYLES:

- Designed for use with Refrigerator End Panel
- Each side of cabinet must be attached to a cabinet, wall or Refrigerator End Panel
- KW361224 and KW361824 have no shelf
- KW362424 includes one full-depth adjustable shelf

Wall Cabinets

30", 36" & 42" High Wall Cabinet (Single Door)



| MODEL | HAMPTON | | | | SHAKER | | | | UF |
|---------------|-----------------|------------------|-------------|---------------|---------------|---------------|----------------|------------------|--------------------|
| | Cognac (COG) | Hickory (NHK) | Oak (MO) | White (SW) | Gray (SDV) | Java (SJM) | White (SSW) | Brindle (BDL) | Unfinished (UF) |
| KW930 | 509460 | 537636 | 497629 | 490701 | 1002405381 | 343553 | 742694 | 1004302522 | 1002759047 |
| KW1230 | 503267 | 521078 | 493074 | 487842 | 1002405413 | 317083 | 524636 | 1004302480 | 1002754231 |
| KW1530 | 503800 | 522318 | 493541 | 487939 | 1002405409 | 318644 | 535864 | 1004302483 | 1002754232 |
| KW1830 | 504102 | 524562 | 493678 | 488073 | 1002405406 | 321108 | 536443 | 1004302486 | 1002754233 |
| KW2130 | 504905 | 525715 | 494923 | 488997 | 1002405403 | 325991 | 536867 | 1004302489 | 1002754253 |
| KW2430 | 503134 | 490471 | 494993 | 489129 | 1002405401 | 327794 | 537729 | 1004302491 | 1002754234 |
| KW936 | 506743 | 537764 | 497699 | 490710 | 1002405380 | 344333 | 745548 | 1004302523 | 1002754255 |
| KW1236 | 502869 | 538297 | 493458 | 487871 | 1002405411 | 317370 | 533373 | 1004302481 | 1002754256 |
| KW1536 | 503812 | 490339 | 493616 | 487974 | 1002405408 | 319438 | 536190 | 1004302484 | 1002754257 |
| KW1836 | 504730 | 525568 | 493713 | 488265 | 1002405405 | 323732 | 536605 | 1004302487 | 1002754258 |
| KW2136 | 487197 | 531705 | 498657 | 539607 | 1002405402 | 326099 | 537354 | 1004302490 | 1002754259 |
| KW2436 | 505252 | 531796 | 495010 | 539642 | 1002405400 | 327953 | 539638 | 1004302492 | 1002754260 |
| KW1242 | 503745 | 538404 | 493516 | 487908 | 1002405410 | 317460 | 535122 | 1004302482 | N/A |
| KW1542 | 504044 | 522848 | 498607 | 488040 | 1002405407 | 320815 | 536254 | 1004302485 | |
| KW1842 | 502987 | 538702 | 494887 | 488524 | 1002405404 | 324747 | 536769 | 1004302488 | |
| KW2442 | 505556 | 490483 | 495035 | 489392 | 1002405399 | 328842 | 539803 | 1004302494 | |

ALL DOOR STYLES:

- Reversible door for left or right hinging

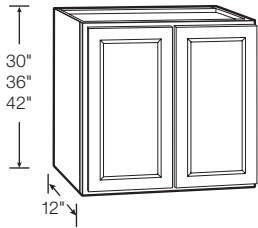
FINISHED DOOR STYLES:

- Includes two full-depth adjustable shelves

UNFINISHED DOOR STYLE:

- Includes one full-depth adjustable shelf

30", 36" & 42" High Wall Cabinet (Double Door)



| MODEL | HAMPTON | | | | SHAKER | | | | UF |
|---------------|-----------------|------------------|-------------|---------------|---------------|---------------|----------------|------------------|--------------------|
| | Cognac (COG) | Hickory (NHK) | Oak (MO) | White (SW) | Gray (SDV) | Java (SJM) | White (SSW) | Brindle (BDL) | Unfinished (UF) |
| KW2730 | 505689 | 532142 | 495043 | 489487 | 1002405398 | 328880 | 540739 | 1004302495 | 1002754254 |
| KW3030 | 503169 | 490508 | 496544 | 490134 | 1002405391 | 336925 | 545230 | 1004302505 | 1002754235 |
| KW3630 | 506320 | 538960 | 497072 | 490639 | 1002405384 | 340759 | 603696 | 1004302518 | 1002754236 |
| KW2736 | 505852 | 538747 | 495067 | 489722 | 1002405397 | 328938 | 541988 | 1004302496 | 1002754262 |
| KW3036 | 507109 | 537226 | 498782 | 492561 | 1002405390 | 337698 | 545956 | 1004302506 | 1002754263 |
| KW3636 | 508869 | 492330 | 497599 | 490691 | 1002405383 | 342971 | 603729 | 1004302520 | 1002754264 |
| KW3042 | 503221 | 491508 | 496609 | 490449 | 1002405389 | 337771 | 546024 | 1004302507 | N/A |
| KW3642 | 487542 | 539255 | 487941 | 539876 | 1002405382 | 343243 | 742589 | 1004302521 | |

FINISHED DOOR STYLES:

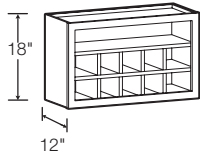
- Include two full-depth adjustable shelves

UNFINISHED DOOR STYLE:

- Includes one full-depth adjustable shelf

Wall Cabinets

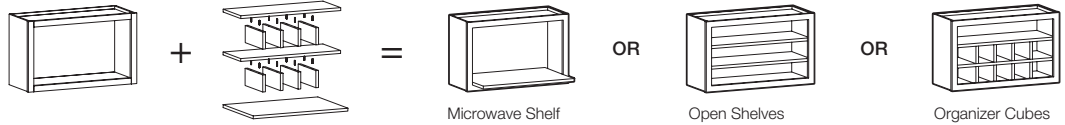
18" High Wall Flex Cabinet



| MODEL | Cognac (COG) | Hickory (NHK) | Oak (MO) | White (SW) | Gray (DV) | Java (JM) | Brindle (BDL) | Unfinished (UF) |
|-----------------|-----------------|------------------|-------------|---------------|--------------|--------------|------------------|--------------------|
| KWFC3018 | 447737 | 482107 | 469623 | 579015 | 1002405349 | 603365 | 1004302529 | N/A |

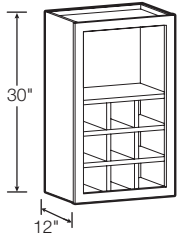
FINISHED DOOR STYLES:

- Includes open cabinet, two full-depth shelves, one 18" deep microwave shelf, eight dividers and dowels for multiple interior configurations
- Shelves and dividers are pre-drilled for dowel placement
- Features a matching interior



For more design ideas see page 20.

30" High Wall Flex Cabinet



| MODEL | Cognac (COG) | Hickory (NHK) | Oak (MO) | White (SW) | Gray (DV) | Java (JM) | Brindle (BDL) | Unfinished (UF) |
|-----------------|-----------------|------------------|-------------|---------------|--------------|--------------|------------------|--------------------|
| KWFC1830 | 452951 | 482657 | 471071 | 582133 | 1002405350 | 603394 | 1004302528 | N/A |

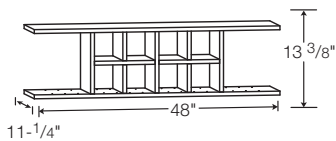
FINISHED DOOR STYLES:

- Includes open cabinet, three full-depth shelves, six dividers and dowels for multiple interior configurations
- Shelves and dividers are pre-drilled for dowel placement
- Features a matching interior



For more design ideas see page 20.

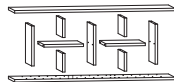
Wall Flex Shelving



| MODEL | Cognac (COG) | Hickory (NHK) | Oak (MO) | White (SW) | Gray (DV) | Java (JM) | Brindle (BDL) | Unfinished (UF) |
|-----------------|-----------------|------------------|-------------|---------------|--------------|--------------|------------------|--------------------|
| KWMS4813 | 1002405219 | 1002405222 | 1002405221 | 1002405223 | 1002405452 | 1002405220 | 1004302531 | N/A |

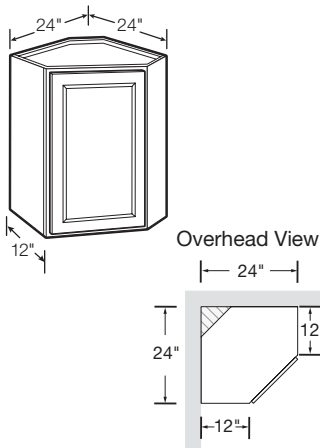
FINISHED DOOR STYLES:

- Includes top shelf, bottom shelf, five large shelf dividers, four small shelf dividers and dowels for multiple interior configurations
- Shelves and dividers are pre-drilled for dowel placement
- Can be trimmed to most widths under 48"
- Ready to Assemble
- Features a matching interior



For more design ideas see page 20.

24" Corner Wall Cabinet



| MODEL | HAMPTON | | | | SHAKER | | | | UF |
|----------------|-----------------|------------------|-------------|---------------|---------------|---------------|----------------|------------------|--------------------|
| | Cognac (COG) | Hickory (NHK) | Oak (MO) | White (SW) | Gray (SDV) | Java (SJM) | White (SSW) | Brindle (BDL) | Unfinished (UF) |
| KWD2430 | 487606 | 492395 | 498145 | 491140 | 1002405379 | 344803 | 745582 | 1004302524 | 1002754237 |
| KWD2436 | 509707 | 539260 | 498787 | 491302 | 1002405378 | 346332 | 786359 | 1004302526 | 1002754265 |
| KWD2442 | 507507 | 539266 | 498325 | 491957 | 1002405377 | 345188 | 786995 | 1004302527 | N/A |

ALL DOOR STYLES:

- Installs in a 24" x 24" wall area
- Reversible door for left or right hinging

FINISHED DOOR STYLES:

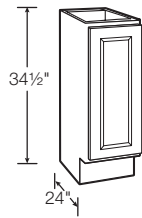
- 30" height includes one full-depth adjustable shelf
- 36" and 42" heights includes two full-depth adjustable shelves

UNFINISHED DOOR STYLE:

- Includes one full-depth adjustable shelf

Base Cabinets

Base Cabinet (Full Height Door)

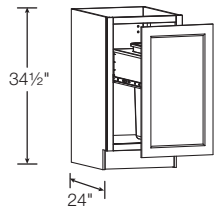


| MODEL | HAMPTON | | | | SHAKER | | | | UF |
|--------------|--------------|---------------|----------|------------|------------|------------|-------------|---------------|-----------------|
| | Cognac (COG) | Hickory (NHK) | Oak (MO) | White (SW) | Gray (SDV) | Java (SJM) | White (SSW) | Brindle (BDL) | Unfinished (UF) |
| KBF09 | 501457 | 507340 | 492355 | 487457 | 1002405437 | 314331 | 428740 | 1004302457 | 1002754273 |

ALL DOOR STYLES:

- Includes one half-depth adjustable shelf
- Reversible door for left or right hinging

Waste Bin Base Cabinet

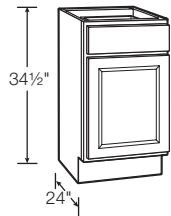


| MODEL | HAMPTON | | | | SHAKER | | | | UF |
|--------------|--------------|---------------|------------|------------|------------|------------|-------------|---------------|-----------------|
| | Cognac (COG) | Hickory (NHK) | Oak (MO) | White (SW) | Gray (SDV) | Java (SJM) | White (SSW) | Brindle (BDL) | Unfinished (UF) |
| KBW18 | 1002405263 | 1002405264 | 1002405261 | 1002405267 | 1002405458 | 1002405265 | 1002405266 | 1004302459 | N/A |

FINISHED DOOR STYLES:

- Heavy-duty ball-bearing drawer glides
- Includes one 12 gallon trash can

Base Cabinet (Single Door)



| MODEL | HAMPTON | | | | SHAKER | | | | UF |
|-------------|--------------|---------------|----------|------------|------------|------------|-------------|---------------|-----------------|
| | Cognac (COG) | Hickory (NHK) | Oak (MO) | White (SW) | Gray (SDV) | Java (SJM) | White (SSW) | Brindle (BDL) | Unfinished (UF) |
| KB12 | 487003 | 505693 | 491271 | 536480 | 1002405446 | 303299 | 412495 | 1004302445 | 1002754241 |
| KB15 | 518431 | 506124 | 491873 | 536557 | 1002405445 | 304334 | 412640 | 1004302446 | 1002754242 |
| KB18 | 487071 | 487039 | 487804 | 540412 | 1002405444 | 304418 | 414002 | 1004302448 | 1002754243 |
| KB21 | 487081 | 537839 | 492167 | 540536 | 1002405443 | 304896 | 414496 | 1004302449 | 1002754274 |
| KB24 | 500089 | 487078 | 487833 | 492190 | 1002405442 | 310097 | 416602 | 1004302450 | 1002754244 |

ALL DOOR STYLES:

- Includes one half-depth adjustable shelf
- Reversible door for left or right hinging

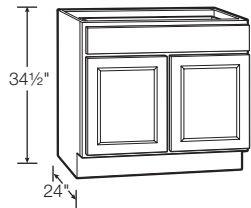
FINISHED DOOR STYLES:

- Ball-bearing drawer glides

UNFINISHED DOOR STYLE:

- Epoxy drawer glides

Base Cabinet (Double Door)



| MODEL | HAMPTON | | | | SHAKER | | | | UF |
|-------------|--------------|---------------|----------|------------|------------|------------|-------------|---------------|-----------------|
| | Cognac (COG) | Hickory (NHK) | Oak (MO) | White (SW) | Gray (SDV) | Java (SJM) | White (SSW) | Brindle (BDL) | Unfinished (UF) |
| KB27 | 502126 | 487343 | 492295 | 492298 | 1002405441 | 312141 | 416917 | 1004302451 | 1002754276 |
| KB30 | 502163 | 487999 | 487861 | 487243 | 1002405440 | 312330 | 421408 | 1004302453 | 1002754245 |
| KB36 | 501214 | 538042 | 492323 | 487342 | 1002405439 | 313351 | 423587 | 1004302454 | 1002754246 |

ALL DOOR STYLES:

- Includes one half-depth adjustable shelf

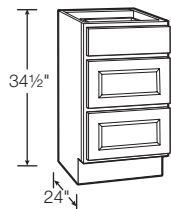
FINISHED DOOR STYLES:

- Ball-bearing drawer glides

UNFINISHED DOOR STYLE:

- Epoxy drawer glides

Drawer Base



| MODEL | HAMPTON | | | | SHAKER | | | | UF |
|--------------|--------------|---------------|------------|------------|------------|------------|-------------|---------------|-----------------|
| | Cognac (COG) | Hickory (NHK) | Oak (MO) | White (SW) | Gray (SDV) | Java (SJM) | White (SSW) | Brindle (BDL) | Unfinished (UF) |
| KDB18 | 502217 | 509796 | 492392 | 492327 | 1002405434 | 315308 | 517572 | 1004302461 | 1002754247 |
| KDB24 | 502263 | 511287 | 492422 | 492359 | 1002405433 | 315742 | 518875 | 1004302462 | 1002754249 |
| KDB30 | 1002405239 | 1002405240 | 1002405246 | 1002405243 | 1002405455 | 1002405241 | 1002405242 | 1004302463 | N/A |
| KDB36 | 1002405247 | 1002405248 | 1002405253 | 1002405251 | 1002405456 | 1002405249 | 1002405250 | 1004302464 | |

FINISHED DOOR STYLES:

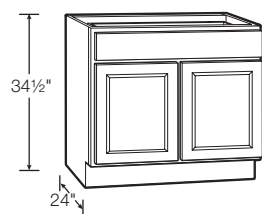
- 18" and 24" widths feature ball-bearing drawer glides
- 30" and 36" widths feature full extension heavy duty drawer glides on all three drawers
- 30" and 36" widths are ideal for pots and pans

UNFINISHED DOOR STYLE:

- Epoxy drawer glides

Base Cabinets

Sink/Cooktop Base Cabinet

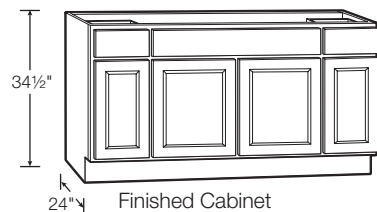


| MODEL | HAMPTON | | | | SHAKER | | | | UF |
|--------------|-----------------|------------------|-------------|---------------|---------------|---------------|----------------|------------------|--------------------|
| | Cognac (COG) | Hickory (NHK) | Oak (MO) | White (SW) | Gray (SDV) | Java (SJM) | White (SSW) | Brindle (BDL) | Unfinished (UF) |
| KSB30 | 501610 | 520059 | 492623 | 487829 | 1002405418 | 316944 | 523246 | 1004302471 | 1002754277 |
| KSB36 | 487174 | 520173 | 492906 | 492382 | 1002405415 | 317060 | 523340 | 1004302473 | 1002754250 |

ALL DOOR STYLES:

- Full-height back panel
- No shelf

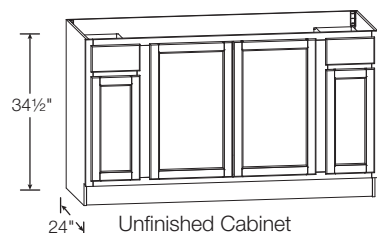
60" Sink/Cooktop Base Cabinet



| MODEL | HAMPTON | | | | SHAKER | | | | UF |
|--------------|-----------------|------------------|-------------|---------------|---------------|---------------|----------------|------------------|--------------------|
| | Cognac (COG) | Hickory (NHK) | Oak (MO) | White (SW) | Gray (SDV) | Java (SJM) | White (SSW) | Brindle (BDL) | Unfinished (UF) |
| KSB60 | N/A | | In-Stock | In-Stock | N/A | | | | N/A |

FINISHED DOOR STYLES:

- Features two top drawers
- Ball-bearing drawer glides
- Full-height back panel
- No shelf

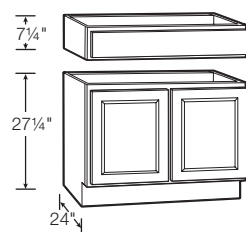


| MODEL | HAMPTON | | | | SHAKER | | | | UF |
|------------------|-----------------|------------------|-------------|---------------|---------------|---------------|----------------|------------------|--------------------|
| | Cognac (COG) | Hickory (NHK) | Oak (MO) | White (SW) | Gray (SDV) | Java (SJM) | White (SSW) | Brindle (BDL) | Unfinished (UF) |
| KSBF60-UF | N/A | | | | | | | | In-Stock |

UNFINISHED DOOR STYLE:

- Features two top drawers
- Epoxy drawer glides
- Full-height back panel
- No shelf

36" Accessible Sink Base Cabinet

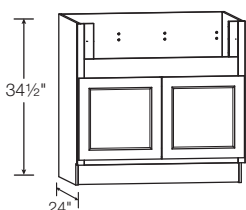


| MODEL | HAMPTON | | | | SHAKER | | | | UF |
|---------------|-----------------|------------------|-------------|---------------|---------------|---------------|----------------|------------------|--------------------|
| | Cognac (COG) | Hickory (NHK) | Oak (MO) | White (SW) | Gray (SDV) | Java (SJM) | White (SSW) | Brindle (BDL) | Unfinished (UF) |
| KSBA36 | 435695 | 474503 | 457846 | 505643 | 1002405414 | 587006 | 644882 | 1004302474 | 1002754278 |

ALL DOOR STYLES:

- Exterior side panels are natural maple laminate
- No shelf

36" Apron Front Sink Base Cabinet



| MODEL | HAMPTON | | | | SHAKER | | | | UF |
|---------------|-----------------|------------------|-------------|---------------|---------------|---------------|----------------|------------------|--------------------|
| | Cognac (COG) | Hickory (NHK) | Oak (MO) | White (SW) | Gray (SDV) | Java (SJM) | White (SSW) | Brindle (BDL) | Unfinished (UF) |
| KSBD36 | 1002405255 | 1002405260 | 1002405256 | 1002405259 | 1002405457 | 1002405257 | 1002405258 | 1004302475 | N/A |

FINISHED DOOR STYLES:

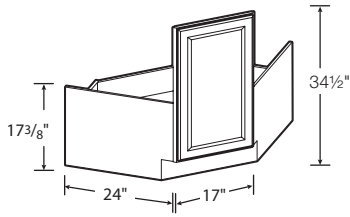
- 2" stiles and 4" rail are trimmable to accommodate various size sinks/cooktops
- Smaller size sinks/cooktops can be accommodated with use of 3" or 6" filler
- No shelf

APRON CUTOUT DIMENSIONS

| Min. Width | Max. Width | Min. Height | Max. Height |
|------------|------------|-------------|-------------|
| 29" | 33" | 7 1/2" | 11" |

Base Cabinets

36" Corner Sink Base Cabinet

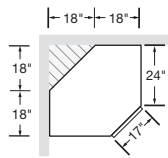


| MODEL | HAMPTON | | | | SHAKER | | | | UF |
|---------------|-----------------|------------------|-------------|---------------|---------------|---------------|----------------|------------------|--------------------|
| | Cognac (COG) | Hickory (NHK) | Oak (MO) | White (SW) | Gray (SDV) | Java (SJM) | White (SSW) | Brindle (BDL) | Unfinished (UF) |
| KCSB36 | 439721 | 475068 | 459463 | 507706 | 1002405435 | 590533 | 645022 | 1004302460 | 1002754279 |

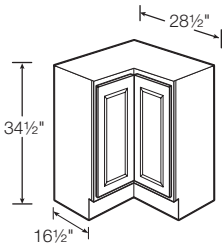
ALL DOOR STYLES:

- Ready to assemble
- Installs in a 36" x 36" area
- No shelf

Overhead View



36" Corner Base Cabinet with Lazy Susan



| MODEL | HAMPTON | | | | SHAKER | | | | UF |
|-------------------|-----------------|------------------|-------------|---------------|---------------|---------------|----------------|------------------|--------------------|
| | Cognac (COG) | Hickory (NHK) | Oak (MO) | White (SW) | Gray (SDV) | Java (SJM) | White (SSW) | Brindle (BDL) | Unfinished (UF) |
| KBLS36 | 502166 | 509093 | 492362 | 487590 | 1002405436 | 314486 | 514416 | 1004302458 | N/A |
| KBLSN36-UF | N/A | | | | | | | | 1002754251 |

ALL DOOR STYLES:

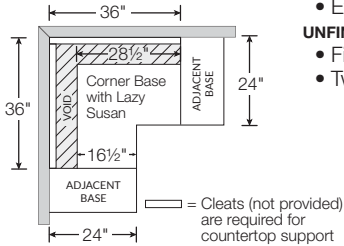
- Installs in a 36" x 36" wall area

FINISHED DOOR STYLES:

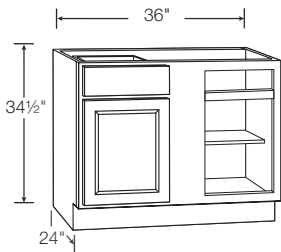
- Two-piece overlay door hinged together in the middle
- Two 360° independently rotating metal racks
- Exterior side panels are natural maple laminate

UNFINISHED DOOR STYLE:

- Fixed traveling door rotates inside of cabinet
- Two plastic trays



36" Blind Base Cabinet



| MODEL | HAMPTON | | | | SHAKER | | | | UF |
|---------------|-----------------|------------------|-------------|---------------|---------------|---------------|----------------|------------------|--------------------|
| | Cognac (COG) | Hickory (NHK) | Oak (MO) | White (SW) | Gray (SDV) | Java (SJM) | White (SSW) | Brindle (BDL) | Unfinished (UF) |
| KBBC45 | 487089 | 488098 | 498392 | 487384 | 1002405438 | 313879 | 427881 | 1004302455 | 1002754280 |

ALL DOOR STYLES:

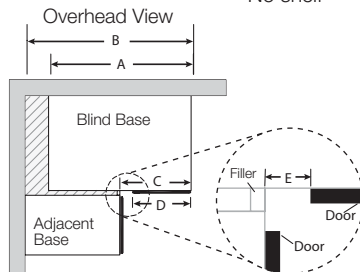
- Door and drawer are reversible to accommodate left or right blind

FINISHED DOOR STYLES:

- Ball-bearing drawer glides
- Includes one half-depth adjustable shelf

UNFINISHED DOOR STYLE:

- Epoxy drawer glides
- No shelf

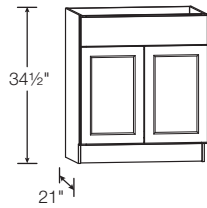


| OVERLAY | A | B | C | D* | E* | MAX B | MIN B |
|---------------------|-----|-----|-----|---------|--------|---------|---------|
| Traditional Overlay | 36" | 42" | 18" | 13" | 4" | 46 1/2" | 39 1/4" |
| Full Overlay | 36" | 42" | 18" | 14 3/4" | 3 1/8" | 46 1/2" | 40 1/8" |
| Unfinished | 36" | 42" | 18" | 14" | 3 1/2" | 46 1/2" | 39 3/4" |

* Only applies when cabinet is pulled to 42"

Kitchen Vanities

Vanity Cabinet

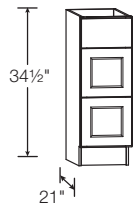


| MODEL | HAMPTON | | | | SHAKER | | | | UF |
|---------------|-----------------|------------------|-------------|---------------|---------------|---------------|----------------|------------------|--------------------|
| | Cognac (COG) | Hickory (NHK) | Oak (MO) | White (SW) | Gray (SDV) | Java (SJM) | White (SSW) | Brindle (BDL) | Unfinished (UF) |
| KVSB24 | 1002405325 | 1002405322 | 1002405326 | 1002405324 | 1002405466 | 1002405328 | 1002405323 | 1004302477 | N/A |
| KVSB30 | 1002405333 | 1002405330 | 1002405334 | 1002405332 | 1002405467 | 1002405335 | 1002405331 | 1004302478 | |
| KVSB36 | 1002405342 | 1002405339 | 1002405343 | 1002405341 | 1002405468 | 1002405344 | 1002405340 | 1004302479 | |

FINISHED DOOR STYLES:

- No drawer
- Works with standard toe kick (KATKX) sold separately
- No shelf

Vanity Drawer Cabinet



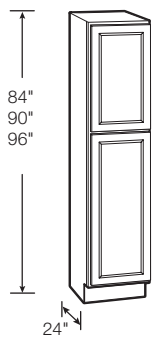
| MODEL | HAMPTON | | | | SHAKER | | | | UF |
|---------------|-----------------|------------------|-------------|---------------|---------------|---------------|----------------|------------------|--------------------|
| | Cognac (COG) | Hickory (NHK) | Oak (MO) | White (SW) | Gray (SDV) | Java (SJM) | White (SSW) | Brindle (BDL) | Unfinished (UF) |
| KVDB12 | 1002405318 | 1002405315 | 1002405319 | 1002405317 | 1002405465 | 1002405320 | 1002405316 | 1004302476 | N/A |

FINISHED DOOR STYLES:

- Includes three drawers
- Works with standard toe kick (KATKX) sold separately
- Ball-bearing drawer glides

Pantry Cabinets

18" Pantry



| MODEL | HAMPTON | | | | SHAKER | | | | UF |
|---------------|-----------------|------------------|-------------|---------------|---------------|---------------|----------------|------------------|--------------------|
| | Cognac (COG) | Hickory (NHK) | Oak (MO) | White (SW) | Gray (SDV) | Java (SJM) | White (SSW) | Brindle (BDL) | Unfinished (UF) |
| KP1884 | 502420 | 488359 | 498553 | 492360 | 1002405432 | 315966 | 521423 | 1004302468 | 1002754252 |
| KP1890 | 487108 | 512244 | 487898 | 487769 | 1002405430 | 316353 | 521897 | 1004302469 | 1002754281 |
| KP1896 | 502693 | 517690 | 492501 | 539479 | 1002405424 | 316396 | 522016 | 1004302470 | N/A |

ALL DOOR STYLES:

- Upper door lines up with 30", 36" and 42" high wall cabinets

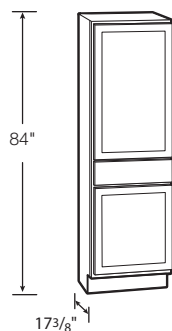
FINISHED DOOR STYLES:

- 84" and 90" includes three full-depth adjustable shelves and one full-depth fixed shelf
- 96" includes four full-depth adjustable shelves and one full-depth fixed shelf
- 96" has removable toe kick that is field installed

UNFINISHED DOOR STYLE:

- Includes two full-depth adjustable shelves and one full-depth fixed shelf

24" Drawer Pantry



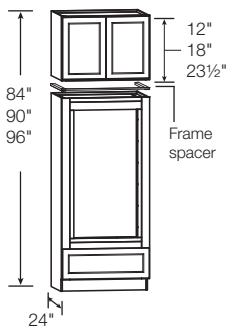
| MODEL | HAMPTON | | | | SHAKER | | | | UF |
|--------------------|-----------------|------------------|-------------|---------------|---------------|---------------|----------------|------------------|--------------------|
| | Cognac (COG) | Hickory (NHK) | Oak (MO) | White (SW) | Gray (SDV) | Java (SJM) | White (SSW) | Brindle (BDL) | Unfinished (UF) |
| KPDR2484-UF | N/A | | | | | | | | In-Stock |

UNFINISHED DOOR STYLE:

- Epoxy drawer glides
- Includes two full-depth adjustable shelves

Oven Cabinets

Double Oven Cabinet



| MODEL | HAMPTON | | | | SHAKER | | | | UF |
|---------|-----------------|------------------|-------------|---------------|---------------|---------------|----------------|------------------|--------------------|
| | Cognac (COG) | Hickory (NHK) | Oak (MO) | White (SW) | Gray (SDV) | Java (SJM) | White (SSW) | Brindle (BDL) | Unfinished (UF) |
| KDV3384 | 1002405272 | 1002405278 | 1002405275 | 1002405287 | 1002405459 | 1002405281 | 1002405284 | 1004302465 | N/A |
| KDV3390 | 1002405273 | 1002405279 | 1002405276 | 1002405288 | 1002405460 | 1002405282 | 1002405285 | 1004302466 | |
| KDV3396 | 1002405274 | 1002405280 | 1002405277 | 1002405290 | 1002405461 | 1002405283 | 1002405286 | 1004302467 | |

FINISHED DOOR STYLES:

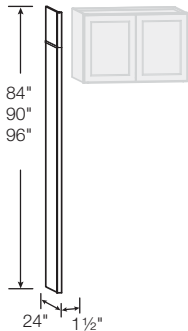
- Includes drawer with full extension heavy duty drawer glides
- Overhead 24" Deep Bridge Cabinet is not pre-installed to oven cabinet, comes as two pieces, boxed separately
- Frame spacer included in KDV3396 only
- Rails and stiles around oven opening are trimmable to accommodate various size ovens
- Can accommodate smaller size ovens with use of 3" and 6" filler
- KDV3384 and KDV3390 have no shelf
- KDV3396 includes one full-depth adjustable shelf for use in overhead bridge cabinet

DOUBLE OVEN CUTOUT DIMENSIONS

| Min. Width | Max. Width | Min. Height | Max. Height |
|------------|------------|-------------|-------------|
| 24" | 30" | 47 5/8" | 52 1/8" |

Accessories

24" Refrigerator End Panel Kit



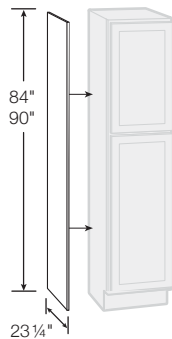
| MODEL | Cognac (COG) | Hickory (NHK) | Oak (MO) | White (SW) | Gray (DV) | Java (JM) | Brindle (BDL) | Unfinished (UF) |
|-------|-----------------|------------------|-------------|---------------|--------------|--------------|------------------|--------------------|
| KAREP | 1002405212 | 1002405216 | 1002405214 | 1002405217 | 1002405451 | 1002405213 | 1004302436 | N/A |

FINISHED DOOR STYLES:

- Kit includes: one 84" high panel, one 12" high panel, one 6" high panel and one piece of scribe molding
- Panels combine to achieve 84", 90" or 96" overall height
- Features 1/2" panels finished on outside to match cabinet exterior
- For use with 24" Deep Wall Bridge cabinets, must be secured to cabinet/wall studs to be secure

For more design ideas see page 21.

Pantry End Panel



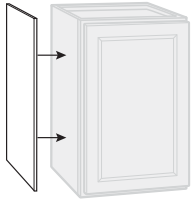
| MODEL | Cognac (COG) | Hickory (NHK) | Oak (MO) | White (SW) | Gray (DV) | Java (SJM) | Brindle (BDL) | Unfinished (UF) |
|------------|-----------------|------------------|-------------|---------------|--------------|---------------|------------------|--------------------|
| KASKP84-UF | N/A | | | | | | | 1002759044 |
| KASKP90-UF | | | | | | | | 1002759049 |

UNFINISHED DOOR STYLE:

- Features 1/8" thick veneer panel

Accessories

Wall & Base Veneer End Panel



| MODEL | Cognac (COG) | Hickory (NHK) | Oak (MO) | White (SW) | Gray (DV) | Java (JM) | Brindle (BDL) | Unfinished (UF) |
|-------------------|-----------------|------------------|-------------|---------------|--------------|--------------|------------------|--------------------|
| KAS1230 | 515523 | 500659 | 490580 | 536194 | 1002405357 | 298909 | 1004302437 | N/A |
| KAS1236 | 515584 | 501275 | 490615 | 536318 | 1002405356 | 299473 | 1004302438 | |
| KAS1242 | 516472 | 502071 | 490670 | 536341 | 1002405355 | 299963 | 1004302439 | |
| KAS2435 | 517309 | 502255 | 490702 | 536381 | 1002405354 | 299983 | 1004302440 | |
| KAIE4835X | 512483 | 497500 | 490376 | 535533 | 1002405366 | 298226 | 1004302425 | |
| KASKW30-UF | N/A | | | | | | | 1002759041 |
| KASKW36-UF | | | | | | | | 1002759048 |
| KASKB35-UF | | | | | | | | 1002759042 |

FINISHED DOOR STYLES:

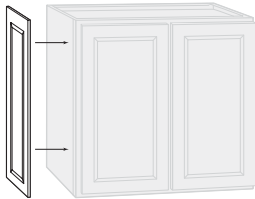
- Finished on one side to match cabinet exterior
- All finishes, excluding Satin White and Dove Gray, feature 3/16" thick veneer panels
- Satin White and Dove Gray finishes feature 3/16" thick laminate panels

UNFINISHED DOOR STYLE:

- Features 1/8" thick veneer panel

| MODEL | Qty. | Width | Height |
|------------|------|---------|---------|
| KAS1230 | 2 | 11 1/4" | 30" |
| KAS1236 | 2 | 11 1/4" | 36" |
| KAS1242 | 2 | 11 1/4" | 42" |
| KAS2435 | 2 | 23 1/4" | 34 1/2" |
| KAIE4835X | 1 | 48" | 34 1/2" |
| KASKW30-UF | 1 | 11 1/4" | 30" |
| KASKW36-UF | 1 | 11 1/4" | 36" |
| KASKB35-UF | 1 | 23 1/4" | 34 1/2" |

Decorative End Panel

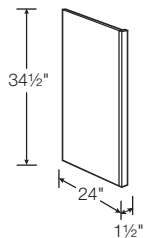


| MODEL | HAMPTON | | | | SHAKER | | | | UF |
|-----------------|-----------------|------------------|-------------|---------------|---------------|---------------|----------------|------------------|--------------------|
| | Cognac (COG) | Hickory (NHK) | Oak (MO) | White (SW) | Gray (SDV) | Java (SJM) | White (SSW) | Brindle (BDL) | Unfinished (UF) |
| KAEP1230 | 508987 | 492898 | 488008 | 540268 | 1002405450 | 296268 | 411910 | 1004302409 | N/A |
| KAEP1530 | 1002405225 | 1002405227 | 1002405226 | 1002405228 | 1002405453 | 1002405235 | 1002405236 | 1004302413 | |
| KAEP1830 | 1002405230 | 1002405232 | 1002405231 | 1002405233 | 1002405454 | 1002405237 | 1002405238 | 1004302414 | |
| KAEP1236 | 509694 | 493090 | 488039 | 532711 | 1002405449 | 296316 | 411928 | 1004302411 | |
| KAEP1242 | 509745 | 493315 | 488089 | 533241 | 1002405448 | 296480 | 412443 | 1004302412 | |
| KAEP2430 | 509810 | 495135 | 488212 | 534004 | 1002405447 | 296887 | 412458 | 1004302416 | |

FINISHED DOOR STYLES:

- Matches style and finish of cabinet doors

Dishwasher End Panel

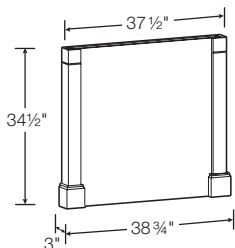


| MODEL | Cognac (COG) | Hickory (NHK) | Oak (MO) | White (SW) | Gray (DV) | Java (JM) | Brindle (BDL) | Unfinished (UF) |
|--------------|-----------------|------------------|-------------|---------------|--------------|--------------|------------------|--------------------|
| KADEP | 508783 | 492567 | 487992 | 540145 | 1002405375 | 295210 | 1004302405 | 1002759050 |

ALL DOOR STYLES:

- Features 1/2" panels finished on outside to match cabinet exterior

Decorative Island Panel Kit



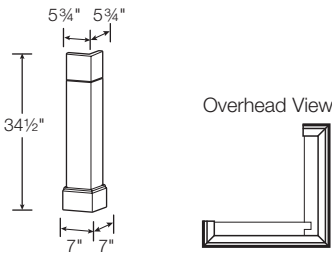
| MODEL | Cognac (COG) | Hickory (NHK) | Oak (MO) | White (SW) | Gray (DV) | Java (JM) | Brindle (BDL) | Unfinished (UF) |
|-----------------|-----------------|------------------|-------------|---------------|--------------|--------------|------------------|--------------------|
| KADPK337 | 454927 | 483362 | 471409 | 582839 | 1002405374 | 603463 | 1004302407 | N/A |

FINISHED DOOR STYLES:

- Panel kit can be field trimmed to accommodate different depths

For more design ideas see page 21.

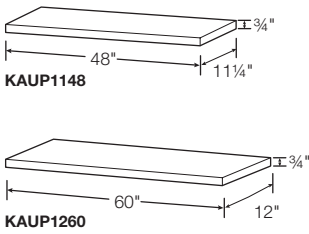
Decorative Corner Post



| MODEL | Cognac (COG) | Hickory (NHK) | Oak (MO) | White (SW) | Gray (DV) | Java (JM) | Brindle (BDL) | Unfinished (UF) |
|--------|-----------------|------------------|-------------|---------------|--------------|--------------|------------------|--------------------|
| KADCP6 | 457781 | 484202 | 472338 | 583021 | 1002405376 | 603498 | 1004302402 | N/A |

- FINISHED DOOR STYLES:
- Features bottom molding on front and side surfaces

Universal Panels

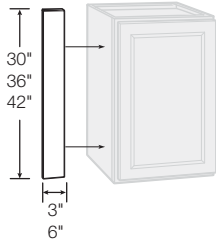


| MODEL | Cognac (COG) | Hickory (NHK) | Oak (MO) | White (SW) | Gray (DV) | Java (JM) | Brindle (BDL) | Unfinished (UF) |
|----------|-----------------|------------------|-------------|---------------|--------------|--------------|------------------|--------------------|
| KAUP1148 | 442115 | 479018 | 465235 | 572184 | 1002405352 | 594977 | 1004302442 | N/A |
| KAUP1260 | 443840 | 479121 | 469154 | 574869 | 1002405351 | 598815 | 1004302444 | |

- FINISHED DOOR STYLES:
- Laminated engineered wood finish on top, bottom, two short edges and one long edge

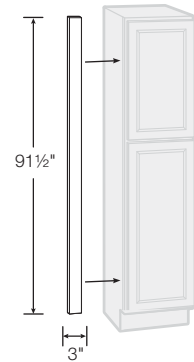
For more design ideas see page 20.

Wall & Base Fillers



| MODEL | Cognac (COG) | Hickory (NHK) | Oak (MO) | White (SW) | Gray (DV) | White (SW) | Brindle (BDL) | Unfinished (UF) |
|----------|-----------------|------------------|-------------|---------------|--------------|---------------|------------------|--------------------|
| KAFS330X | 510182 | 496421 | 489506 | 534142 | 1002405373 | 534142 | 1004302417 | 1002759045 |
| KAFS336X | 510799 | 496738 | 489778 | 534799 | 1002405372 | 534799 | 1004302418 | 1002759052 |
| KAFS342X | 511599 | 496990 | 489790 | 535023 | 1002405371 | 535023 | 1004302419 | N/A |
| KAFS630X | 512012 | 497254 | 490078 | 535426 | 1002405369 | 535426 | 1004302421 | 1002759051 |
| KAFS636X | 512097 | 497353 | 490209 | 535449 | 1002405368 | 535449 | 1004302422 | 1002759053 |
| KAFS642X | 512226 | 497438 | 490215 | 535460 | 1002405367 | 535460 | 1004302424 | N/A |

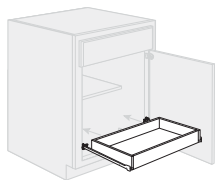
91 1/2" Pantry Filler



| MODEL | Cognac (COG) | Hickory (NHK) | Oak (MO) | White (SW) | Gray (DV) | Java (JM) | Brindle (BDL) | Unfinished (UF) |
|----------|-----------------|------------------|-------------|---------------|--------------|--------------|------------------|--------------------|
| KAFS396X | 511728 | 497077 | 489940 | 535337 | 1002405370 | 297637 | 1004302420 | 1002759054 |

- ALL DOOR STYLES:
- For use with 96" high cabinets, can be field trimmed for use with 90" or 84" high cabinets

Ready to Assemble Pull Out Drawer



| Model | Pull Out Drawer Width | Base or Pantry Cabinet Width | Finished (JM, COG, NHK, MO, DV, SW, BDL) | Unfinished (UF) |
|----------|-----------------------|------------------------------|--|-----------------|
| KADRTA12 | 7" | 12" | 1004125538 | N/A |
| KADRTA15 | 10" | 15" | 1004125539 | |
| KADRTA18 | 13" | 18" | 1004125540 | |
| KADRTA21 | 16" | 21" | 1004125541 | |
| KADRTA24 | 19" | 24" | 1004125542 | |
| KADRTA27 | 22" | 27" | 1004125544 | |
| KADRTA30 | 25" | 30" | 1004125545 | |

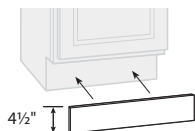
FINISHED DOOR STYLES:

- Kit includes pull out drawer and all installation hardware
- For use inside of 24" deep cabinets

UNFINISHED DOOR STYLE:

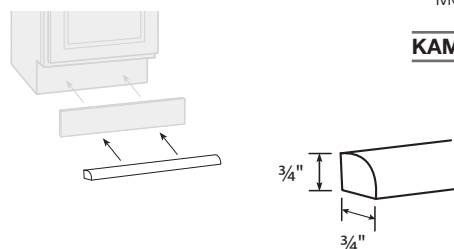
- Not designed for use inside Unfinished cabinets

91 1/2" Toe Kick Molding



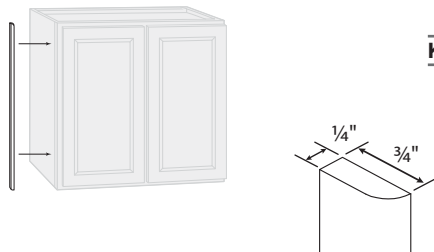
| MODEL | Cognac (COG) | Hickory (NHK) | Oak (MO) | White (SW) | Gray (DV) | Java (JM) | Brindle (BDL) | Unfinished (UF) |
|-------|--------------|---------------|----------|------------|------------|-----------|---------------|-----------------|
| KATKX | 518111 | 502617 | 490750 | 536440 | 1002405353 | 299996 | 1004302441 | 1002759046 |

91 1/2" Shoe Trim Molding



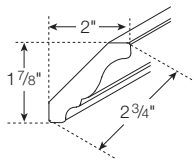
| MODEL | Cognac (COG) | Hickory (NHK) | Oak (MO) | White (SW) | Gray (DV) | Java (JM) | Brindle (BDL) | Unfinished (UF) |
|-------|--------------|---------------|----------|------------|------------|-----------|---------------|-----------------|
| KAMTX | 514931 | 500341 | 490439 | 535945 | 1002405359 | 298545 | 1004302433 | 1002759055 |

91 1/2" Scribe Molding

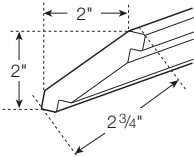


| MODEL | Cognac (COG) | Hickory (NHK) | Oak (MO) | White (SW) | Gray (DV) | Java (JM) | Brindle (BDL) | Unfinished (UF) |
|-------|--------------|---------------|----------|------------|------------|-----------|---------------|-----------------|
| KAMSX | 514305 | 499763 | 490425 | 535628 | 1002405360 | 298283 | 1004302432 | 1002759056 |

91 1/2" Crown Molding



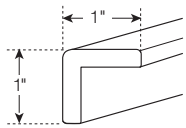
KAMC5X - Traditional



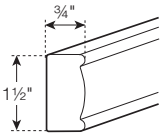
KAMC4X - Shaker

| MODEL | Cognac (COG) | Hickory (NHK) | Oak (MO) | White (SW) | Gray (DV) | Java (JM) | Brindle (BDL) | Unfinished (UF) |
|---------------|-----------------|------------------|-------------|---------------|--------------|--------------|------------------|--------------------|
| KAMC5X | 512570 | 497596 | 490412 | 535591 | N/A | | | 1002759057 |
| KAMC4X | N/A | | | 670461 | 1002405364 | 669807 | 1004302428 | N/A |

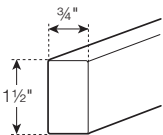
91 1/2" Molding



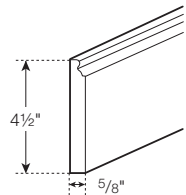
KAOCMX - Outside Corner



KAMDEX - Decorative Edge



KAMSQX - Square Edge

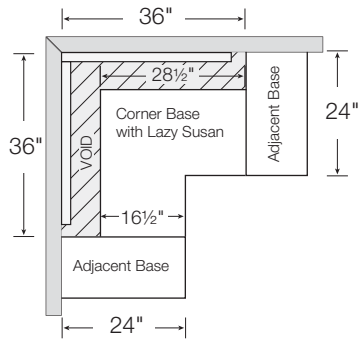


KAMBSX - Base

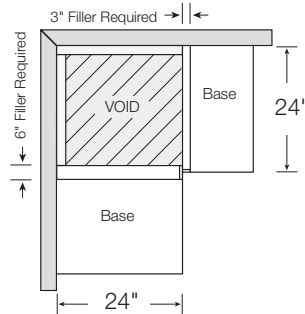
| MODEL | Cognac (COG) | Hickory (NHK) | Oak (MO) | White (SW) | Gray (DV) | Java (JM) | Brindle (BDL) | Unfinished (UF) |
|---------------|-----------------|------------------|-------------|---------------|--------------|--------------|------------------|--------------------|
| KAOCMX | 441041 | 477593 | 462111 | 512034 | 1002405358 | 592745 | 1004302434 | 1002759058 |
| KAMDEX | 446790 | 481578 | 469574 | 469574 | 1002405362 | 603074 | 1004302429 | N/A |
| KAMSQX | 446235 | 479590 | 469557 | 469557 | 1002405361 | 599182 | 1004302430 | N/A |
| KAMBSX | 441141 | 478060 | 464733 | 464733 | 1002405365 | 593021 | 1004302427 | N/A |

How to Turn the Corner

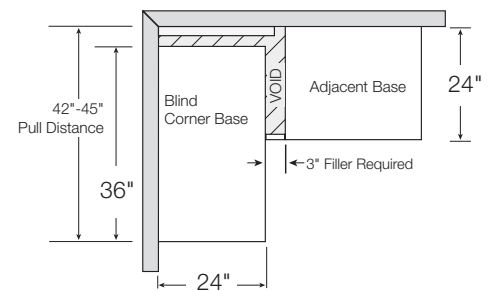
Lazy Susan Option



Block Out Option

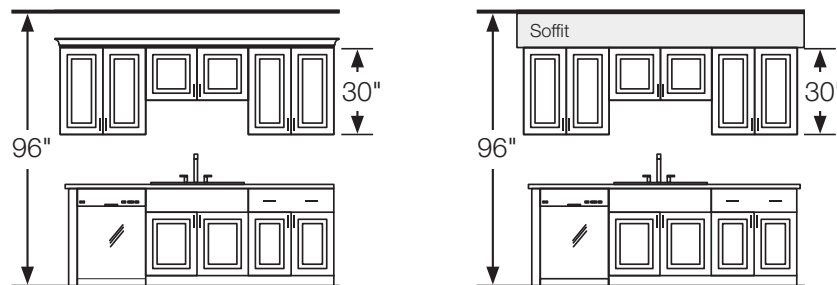


Blind Base Option

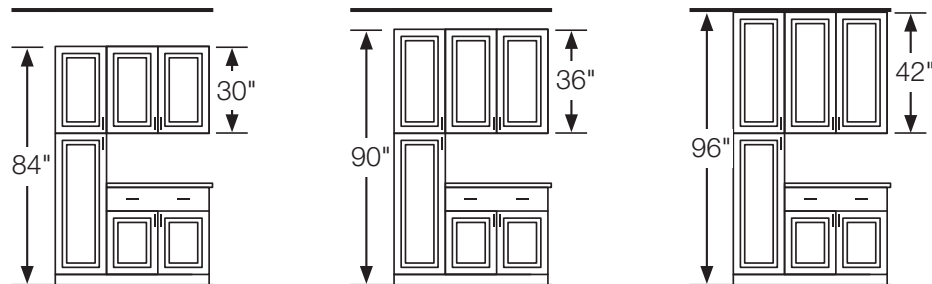


Designing with Different Wall Cabinet Heights

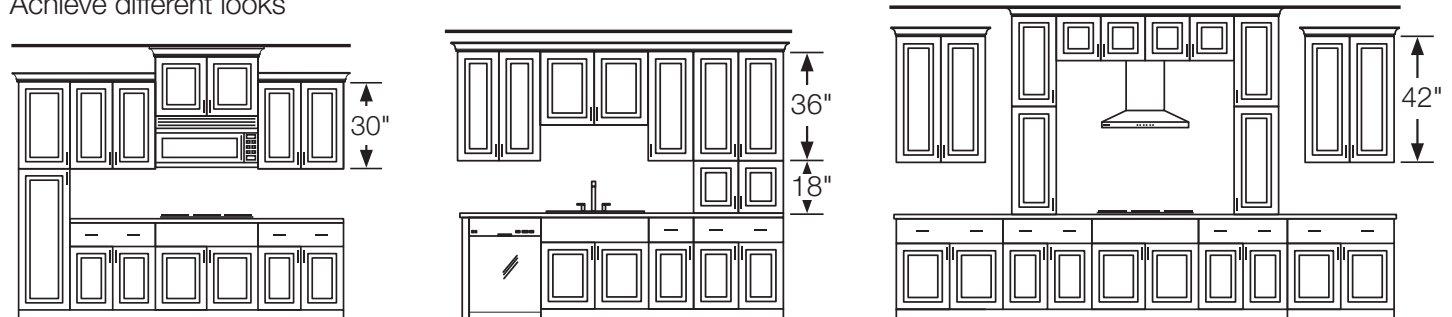
Typical layouts with 8-foot ceilings



Maximize storage with taller walls and pantries

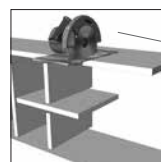
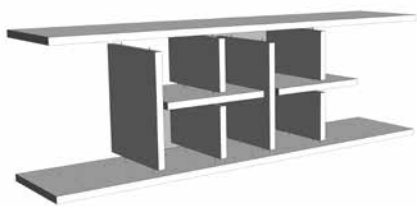


Achieve different looks

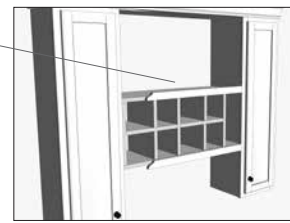


Design and Layout Ideas

Wall Flex Shelf



The Wall Flex Shelf can be configured and cut to size.



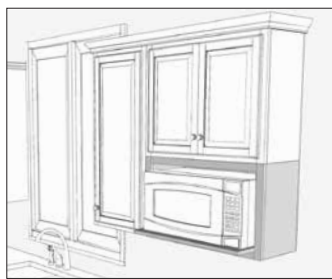
For a built-in look, finish the installation with KAMSQX molding on the front of the shelf kit.

Use it your way. Ideal for wine, cookbooks or to showcase special items. This kit must be installed between two cabinets.

Wall Flex Cabinets



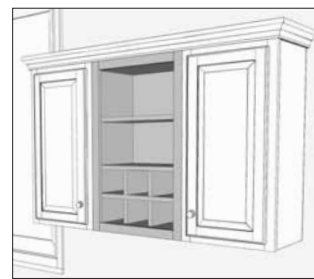
30" X 18"



Microwave Shelf



18" X 30"



Organizer Cubes

Our flex cabinets come with shelves and dividers so you can configure it to meet your needs.

Universal Panels and Moldings



48" x 11-1/4" Universal Panel



60" x 12" Universal Panel



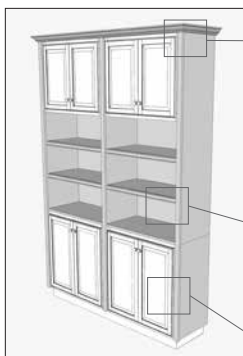
Decorative Edge Molding



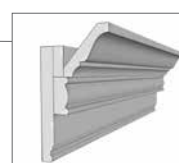
Square Edge Molding



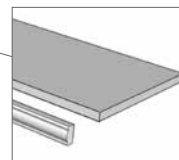
Span Open Spaces



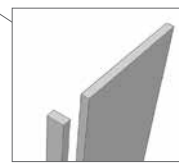
Build Custom Features



Stacked Crown



Universal Panel with Edge Molding



Universal Panel with Edge Molding

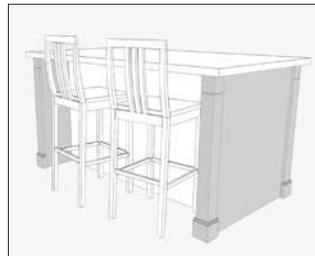
Use Universal Panels to add affordable shelf space and accent storage in any room. Available in two sizes, they can be used in vertical or horizontal applications and combined with edge molding for a decorative accent.

Decorative Island Panel Kits

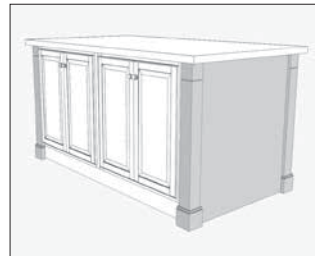


A great way to maximize storage or work space, island panels are a fast and easy way to build an island or a peninsula.

One post is shipped loose to allow the panel to be trimmed.



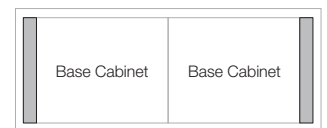
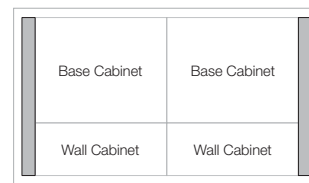
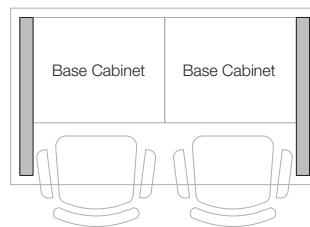
Island with Seating



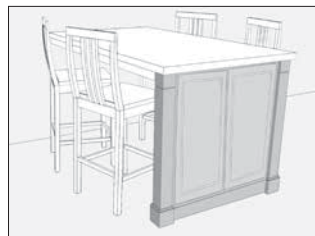
Island with Wall Cabinets



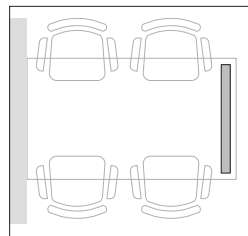
Base Depth Island



Panel kit can be cut to accommodate different depths



Seating area with Countertop Support and Decorative End Panels. Decorative End Panels sold separately.



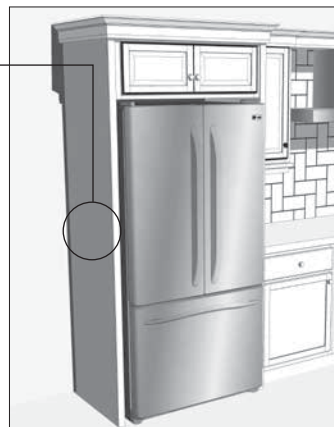
Use one decorative island panel to create a roomy peninsula for a convenient eating area in the kitchen.

Refrigerator End Panels Kits

Refrigerator End Panels must be attached to a deep bridge cabinet, and anchored to studs in wall. Bridge Cabinet sold separately. Bridge cabinets are KW361224, KW361824 and KW362424.



Refrigerator End Panel Kit includes 84", 12" and 6" panels, and scribe molding; Combine to meet your needs.



Refrigerator End Panel Kit combined with KW361224 bridge cabinet.



Refrigerator End Panel Kit combined with KW362424 bridge cabinet.

Care and Cleaning

- For normal spills, a damp cloth is sufficient. Remember to dry the surface immediately.
- Thermofoil (RTF) doors can be cleaned with most general purpose household cleaners.
- Wood doors can be cleaned with most general purpose household cleaners and polished with most furniture care products, not containing wax, petroleum solvents or silicones.
- Do not use caustic agents and/or abrasive scrubbers, or oven cleaners.
- Nicks and dings can be repaired with touch-up kits, available by calling Hampton Bay Customer Care at (888) 578-4009.
- For stains that persist, flakes of Ivory soap diluted in warm water may be used with a cloth or sponge. Remember to dry the surface immediately.
- Do not let liquids stay on the surface for a long period of time. The surface is water resistant, not waterproof.

Repairing Door or Drawer Edge Scrapes

Use touch-up sticks available by calling Hampton Bay Customer Care at (888) 578-4009 to fill in a scratch or nick. Remove excess residue leaving a smooth surface.

Wood Characteristics

- Wood:** Wood species in all finishes will exhibit color changes when exposed to different types of light and environments over time. Such color changes are expected in Hampton Bay brand cabinetry and are not defects. Graining differences, mineral streaks and color variations are expected in wood cabinetry. Hampton Bay cabinet door styles often exhibit these characteristics and such graining differences, mineral streaks and color variations are not defects.
- Maple:** Maple wood inherently has a characteristic known as “birdseye” or “fiddleback” pattern in the wood. When finished, it can have the appearance of a varied sheen, a splotchy appearance, or satiny look. This is the beauty of real maple and not a defect. In most cases it takes on a very pleasant look. Mineral streaks are also common and may appear darker when stained.
- Oak:** Oak is an open-grained hardwood with varying patterns ranging from straight grain to wide arcs. When stained, there will be a noticeable difference in the color shades between the open and closed grain areas of the wood. Wood can range from pink to a reddish brown.
- Hickory:** Hickory is a heavy hardwood which when finished has a warm, appealing appearance. Distinctive color streaks, combined with knots and other noticeable characteristics, make for a rustic appearance. While some parts may be clear and others extremely rustic, the characteristics of hickory are an inherent part of its charm and are considered to be a desirable part of the total look.
- Beech:** Beech wood is typically a pale cream color that turns into a pink to reddish tone due to a light steaming process that occurs during kiln drying. Small pin knots can be found in small clusters and is a normal occurrence in the Beech wood. Grain appears tightly closed and may have some slightly darker spots of redheart within the sapwood which gives depth and character to the Beech wood.

Special Order Processing

Special order Hampton Bay cabinet orders ship in 2 weeks. Some orders and store locations, including those outside the Continental U.S., may require more delivery time.

- Orders placed before 3:00 pm EST M-F will be recognized at the end of the same business day
- Orders placed after 3:00 pm EST M-F will be recognized the next business day
- Orders placed after 3:00 pm EST F-Sun will be recognized on Monday (if not a holiday)
- Holidays are NOT included in the 2 week lead-time
- A five cabinet minimum applies to all Hampton Bay Special Orders - accessories are not included in the five cabinet minimum.

RTV Procedures

Hampton Bay Special Order (Vendor # 60071203) and In-Stock (Vendor # 71203):

- **Carrier Damage** – If damage occurs during transit, the Receiving Department must file a freight claim with the Home Depot authorized carrier. Special Order product should be reordered for customer as needed (see “Replacement and Add-On Orders” bullet below).
 - ▶ The store determines whether the product can be sold with a markdown, donated or field destroyed.
- **Manufacturer Defect** – If a product contains a manufacturing or product defect, the Receiving Department should process the product using an RGA (see “Returns” bullet below). Product should be reordered for customer (see “Replacement and Add-On Orders” bullet below).
- **Incorrect Product** – If you believe that incorrect product was received, please contact Customer Care at (888) 578-4009.
- **Replacement and Add-On Orders** – When placing a replacement order or add-on order to complete an existing job, reference the original PO in the 2020 notes field otherwise orders will not be processed if the order falls under the (5) five cabinet order minimum.
- **Returns** – For all returns, regardless of reason, the Receiving Department should assign an RTV tag and utilize their department’s First Phone to gain an RGA.
 - ▶ All returned product should be destroyed in field regardless of RTV code.
- **Cancellation** – Hampton Bay Customer Care will not allow cancellations or changes to orders after 24 hours from receipt of the PO from the store. All cancellation requests must be submitted by email from the store to homeproducts_CC@woodmark.com in order to receive a cancellation number. A purchase order is not cancelled until a cancellation number has been issued.
- **Additional Questions** – Please contact Customer Care at (888) 578-4009 with any additional questions.

Warranty Details

- **Limited Lifetime Applies to All Finished Cabinetry**
- **1 Year Limited Applies to All Unfinished Cabinetry**

What This Warranty Covers: American Woodmark Corporation, the manufacturer of Hampton Bay, warrants its parts and products to be free of substantial defects in materials and workmanship from the original date of purchase under normal home use. This warranty is offered only to the original consumer purchaser and may not be transferred.

What Hampton Bay Will Do Under The Warranty: During the warranty period, the manufacturer of Hampton Bay will repair or replace any part or product that proves to have substantial defects in materials or workmanship, or the manufacturer of Hampton Bay will provide an equivalent replacement product. In keeping with our policy of continuous product improvement, the manufacturer of Hampton Bay reserves the right to change specifications in design and materials without notice and with no obligation to retrofit products we previously manufactured.

How State Law Applies: This warranty gives you specific legal rights, and you may also have other rights that vary from state to state.

Implied warranties: The manufacturer of Hampton Bay disclaims any implied warranty of merchantability, and there are no warranties that extend beyond the descriptions on the face hereof. To the extent that such disclaimer is not valid under applicable law, any implied warranty shall be coextensive in duration with this warranty.

Wood Characteristics, Aging and Printing Limitations: Because of the varying natural characteristics of wood and the effects of aging, product shown in displays and/or printed materials will not be an exact match to new cabinetry you will receive. Depending on the wood characteristics, the age of a sample and the environment of the showroom, samples will show some degree of variation from new product. In addition, you should not expect all doors, drawer fronts, trim or molding to match exactly in either finish or grain. Variation in wood is normal and unavoidable. In addition, it is not possible to exactly match our colors in printed materials. Therefore, you should view the actual samples when making your color selection.

What This Warranty Does Not Cover: This warranty does not cover any problems or damage which result from improper transportation, improper installation, mishandling, misuse, abuse, neglect, abnormal use, commercial use, improper maintenance, non-Hampton Bay repairs, accidents, or acts of God, such as hurricanes, fire, earthquakes or floods. This warranty

Important Information

and any applicable implied warranties do not cover incidental or consequential damages arising from any defects in the product, such as labor charges for installation or removal of the product or any associated products. This warranty does not cover defects or damage caused by normal wear & tear, alterations, environmental conditions, humidity absorption, or mold. In addition, variations in wood grain, finish color, aging or other natural wood and stain characteristics are not considered defects and are not covered by this warranty. Some states do not allow the exclusion or limitation of incidental or consequential damages, so the above limitation or exclusion may not apply to you.

How to Obtain Warranty Service: If you need replacement parts or would like to make a warranty claim, please contact Hampton Bay Customer Care at (888) 578-4009. All warranty claims must include the model number of the product, copy of the original receipt and the nature of the problem. In addition, the manufacturer of Hampton Bay may at its discretion require inspection of the installation site or authorize the prepaid return of the claimed defective part. Merchandise not pre-approved for return will not be accepted and the associated claim not accepted.

Products should be examined for defects prior to installation. This warranty also does not cover labor charges for installation or removal of the product or any associated products. If upon inspection you find our product has a damaged or missing part, it may not be necessary to return the unit to the store of purchase. Please contact Hampton Bay Customer Care to possibly obtain a replacement part.

Important Health Notice:

Some of the building materials used in this home (or these building materials) emit formaldehyde. Eye, nose, and throat irritation, headache, nausea and a variety of asthma-like symptoms, including shortness of breath, have been reported as a result of formaldehyde exposure. Elderly persons and young children, as well as anyone with a history of asthma, allergies, or lung problems, may be at greater risk. Research is continuing on the possible long-term effects of exposure to formaldehyde.

Reduced ventilation may allow formaldehyde and other contaminants to accumulate in the indoor air. High indoor temperatures and humidity raise formaldehyde levels. When a home is to be located in areas subject to extreme summer temperatures, an air-conditioning system can be used to control indoor temperature levels. Other means of controlled mechanical ventilation can be used to reduce levels of formaldehyde and other indoor air contaminants.

If you have any questions regarding the health effects of formaldehyde, consult your doctor or local health department.

WARNING: This product can expose you to chemicals including formaldehyde, which is known to the State of California to cause cancer, and methanol, which is known to the State of California to cause birth defects or other reproductive harm. For more information go to www.P65Warnings.ca.gov/products.

© Copyright 2021 American Woodmark Corporation. All rights reserved. THE HOME DEPOT® is a registered trademark of Home Depot, Inc. HAMPTON BAY® is a registered trademark of Home Depot Product Authority, LLC.

All Hampton Bay® products meet or exceed the stringent performance requirements established by the Kitchen Manufacturers Association (KCMA). The KCMA Performance & Construction Standards ANSI/KCMA A161.1 is recognized and overseen by the American National Standards Institute. This standard also meets the HUD specification 4910.1 Paragraph 611-1.1, Minimum Property Standards for Housing.

Finished Cabinetry



Unfinished Cabinetry

