

HAMPTON BAY®

DESIGNER SERIES



Cabinet Specification Guide

Special Order Vendor #60008081

SOM290677 Effective Date: 9/7/21

D29K69210-02.AWMQ32021





MELVERN
STORM GRAY

Front and back cover feature the Melvern Storm Gray collection with clean, full overlay doors and striking recessed center panels.

- Frameless Cabinet Construction..... 3, 6
- Door Styles and Finishes..... 4-5
- Cabinet Reveals and Dimensions..... 7
- Wall Cabinets..... 8-10
- Base Cabinets..... 11-14
- Tall Cabinets..... 15
- Oven Cabinets..... 15
- Vanity Cabinets..... 16
- Accessories..... 17-19
- Customer Care..... 20-21
- Warranty..... 22



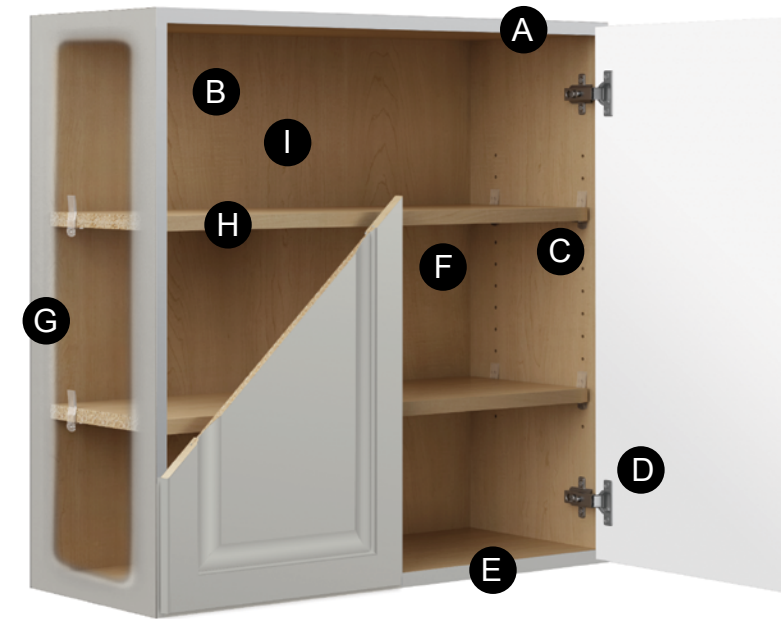
Melvern Storm Gray RTF



All Hampton Bay® Designer Series products meet or exceed the stringent performance requirements established by the Kitchen Manufacturers Association (KCMA). The KCMA Performance & Construction Standards ANSI/KCMA A161.1 is recognized and overseen by the American National Standards Institute. This standard also meets the HUD specification 4910.1 Paragraph 611-1.1, Minimum Property Standards for Housing.

CONSTRUCTION

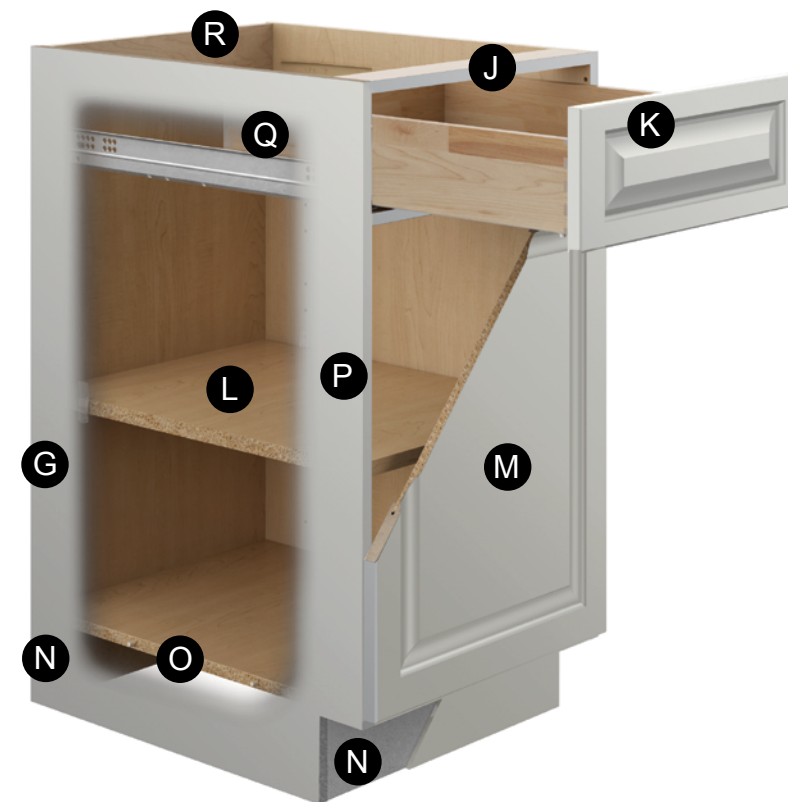
Wall Construction



- A** 3/4" top panel*
- B** 1/4" back panel* dadoed into end panels with concealed 4" mounting rail
- C** Self locking shelf clips
- D** Full overlay door with 6-way adjustable, Soft Close clip-on hinges
- E** 3/4" bottom panel*
- F** White or Natural Laminate interiors (based on finish, see Finish Details section on page 6)
- G** 5/8" side panels
- H** 3/4" full-depth adjustable shelves*
- I** Center shelf pin on cabinets 36" and wider

*Interior color varies by finish, refer to Finish Details on page 6 for more details.
Interior shown in Natural Laminate.*

Base Construction



- J** 5/8" plywood rail doweled and glued into end panels
- K** Full overlay slab or five piece drawer front (based on door style, see pages 4-5)
- L** 3/4" full-depth adjustable shelves
- M** Full overlay door with 6-way adjustable, Soft Close clip-on hinges
- N** 5/8" bottom rail and toe kick
- O** 5/8" bottom panel
- P** 5/8" side panels
- Q** Hardwood dovetail drawer with under-mount Soft Close glides
- R** 1/4" laminated furniture board back panel with 4" high x 5/8" thick plywood mounting rail

**Top, bottom, back and shelves of any cabinet that features a matching interior are constructed from 5/8" material.*

DOOR STYLES AND FINISHES

DOOR STYLES AND FINISHES

Edgeley White RTF*
(EDWH)



Edgeley Glacier RTF*
(EDGL)



Edgeley Thunder RTF*
(EDTH)



Melvern White RTF*
(MLWH)



Melvern Heron Gray RTF*
(MLGR)



Melvern Storm Gray RTF*
(MST)



Edgeley Driftwood RTF*
(EDDW)



Elgin White RTF*
(ELWH)



Elgin Heron Gray RTF*
(ELGR)



Soleste Spice
(SHSP)



Order a Sample Door on [homedepot.com](https://www.homedepot.com)

DOOR	MODEL #	OMSID
Edgeley White	HBDSSD-LX-30	301814733
Edgeley Glacier	HBDSSD-LX-76W	301814729
Edgeley Thunder	HBDSSD-LX-76G	301814727
Edgeley Driftwood	HBDSSD-LX-79A	301814725
Elgin White	HBDSSD-HM-30	301814724
Elgin Heron Gray	HBDSSD-HM-83R	306861341
Melvern White	HBDSSD-MSF-30	301814638
Melvern Heron Gray	HBDSSD-MSF-83R	306861342
Melvern Storm Gray	HBDSSD-MSF-37R	317913534
Soleste Spice	HBDSSD-SHM-19	301814717

*Doors in RTF styles feature front and sides wrapped to match cabinet exterior with white melamine back

General Construction

Cabinets are frameless “European style” design with full access and full overlay styling. All panels and rail components are joined with engineered dowels, glue, screws, staples or a combination of those components appropriate to the typical use of the cabinet.

All frameless cabinet boxes are made from commercial grade furniture board with laminated, water resistant (not waterproof) surfaces.

Soft Close Hinge

Standard doors feature 6-way adjustable, Soft Close clip-on hinges with 110° opening (except where noted).



Shelves

Standard cabinet shelves are full-depth, 3/4" adjustable shelves with self-locking shelf clips. Shelves in cabinets 36" or wider also include a center shelf pin.



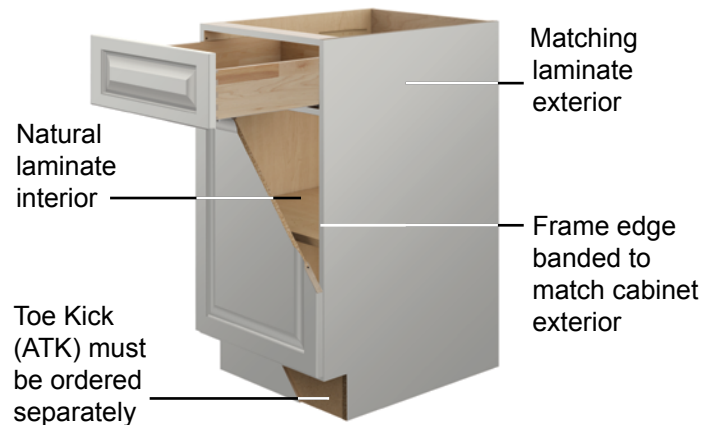
Drawer Construction

All drawers feature a hardwood drawer box with dovetail construction. Standard drawers and large drawers 24" wide or under feature 75lb rated under-mount Soft Close glides. Large drawers 30" or wider feature 100lb rated heavy-duty side-mount Soft Close glides.

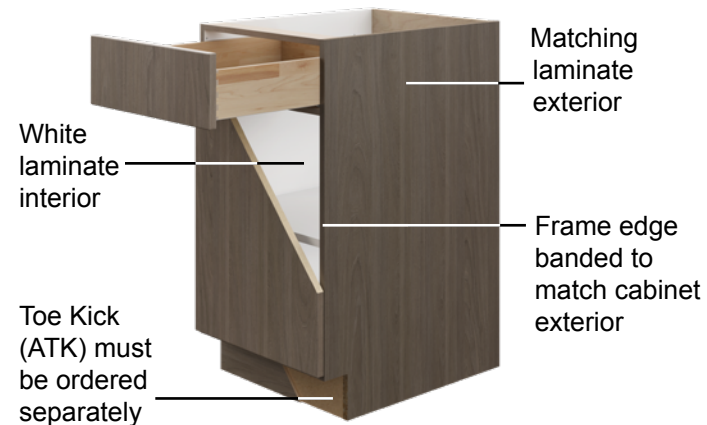
STANDARD DRAWERS		
A	Drawer depth	21"
B	Travel (extension)	20 1/4"
C	Clearance inside	3 3/4"

Finish Details

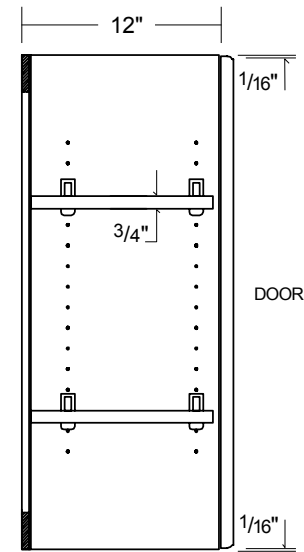
Spice and Heron Gray Door Styles



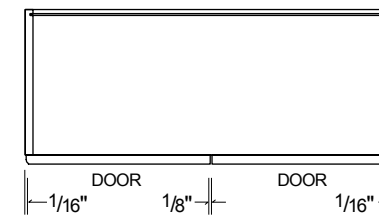
RTF Door Styles (excluding Heron Gray)



Wall Cabinets



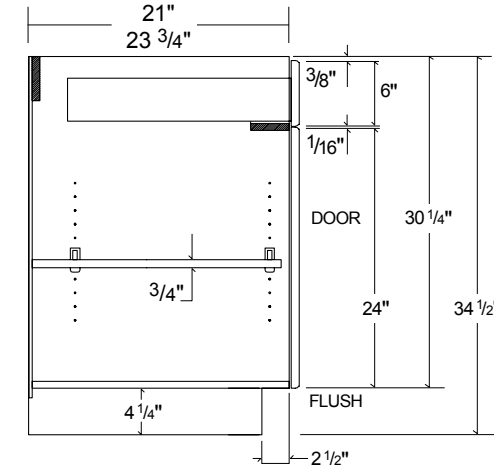
SIDE VIEW



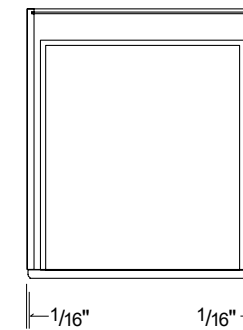
TOP VIEW

- 24" wall cabinets include one full-depth adjustable shelf
- 30" and 36" wall cabinets include two full-depth adjustable shelves
- 42" wall cabinets include three full-depth adjustable shelves

Base / Vanity Cabinets



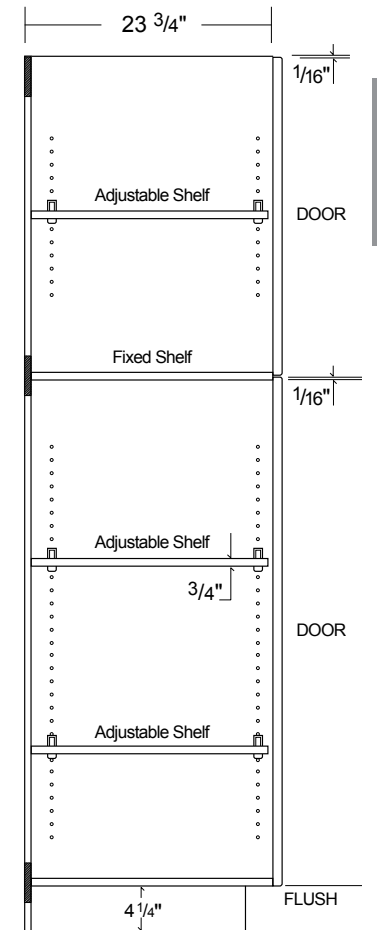
SIDE VIEW



TOP VIEW

- Standard base cabinets include one full-depth adjustable shelf

Tall Cabinets



SIDE VIEW

- Tall cabinets include one full-depth fixed shelf
- 84" and 90" tall cabinets include three full-depth adjustable shelves
- 96" tall cabinets include four full-depth adjustable shelves
- Top door(s) on tall cabinets align with wall cabinet door(s)

CABINET DIMENSIONS

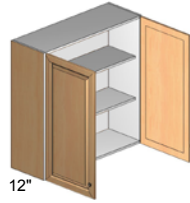
Single Door Wall Cabinet 12" Deep (W)



- 30" and 36" high wall cabinets include two full-depth adjustable shelves
- 42" high wall cabinets include three full-depth adjustable shelves

WIDTH	MODEL NUMBER		
	30" HIGH	36" HIGH	42" HIGH
9"	W930	W936	W942
12"	W1230	W1236	W1242
15"	W1530	W1536	W1542
18"	W1830	W1836	W1842
21"	W2130	W2136	W2142

Double Door Wall Cabinet 12" Deep (W)



- 30" and 36" high wall cabinets include two full-depth adjustable shelves
- 42" high wall cabinets include three full-depth adjustable shelves

WIDTH	MODEL NUMBER		
	30" HIGH	36" HIGH	42" HIGH
24"	W2430	W2436	W2442
27"	W2730	W2736	W2742
30"	W3030	W3036	W3042
33"	W3330	W3336	W3342
36"	W3630	W3636	W3642

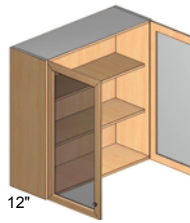
Glass Door Cabinet w/ Matching Interior 12" Deep (WGD)



- Open frame door with clear glass
- Cabinets feature a matching laminate interior
- Glass is NOT tempered – certain building codes may prohibit the use of non-tempered glass installed below a minimum height
- 30" and 36" high wall cabinets include two full-depth adjustable shelves
- 42" high wall cabinets include three full-depth adjustable shelves

WIDTH	MODEL NUMBER		
	30" HIGH	36" HIGH	42" HIGH
15"	WGD1530	WGD1536	WGD1542
18"	WGD1830	WGD1836	WGD1842

Glass Door Cabinet w/ Matching Interior 12" Deep (WGD)



- Open frame door with clear glass
- Cabinets feature a matching laminate interior
- Glass is NOT tempered – certain building codes may prohibit the use of non-tempered glass installed below a minimum height
- 30" and 36" high wall cabinets include two full-depth adjustable shelves
- 42" high wall cabinets include three full-depth adjustable shelves

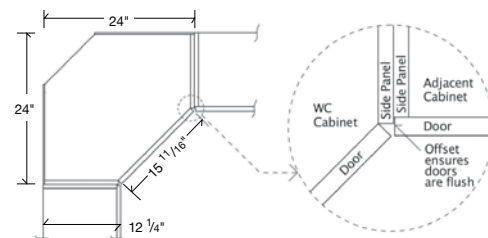
WIDTH	MODEL NUMBER		
	30" HIGH	36" HIGH	42" HIGH
30"	WGD3030	WGD3036	WGD3042
36"	WGD3630	WGD3636	WGD3642

Wall Diagonal Corner Cabinet (WC)

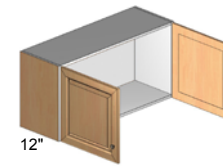


- 30" and 36" high wall cabinets include two adjustable shelves
- 42" high wall cabinets include three full-depth adjustable shelves

WIDTH	MODEL NUMBER		
	30" HIGH	36" HIGH	42" HIGH
24"	WC2430	WC2436	WC2442



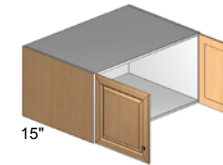
Wall Bridge Cabinet 12" Deep (W)



- 12", 15" and 18" high wall cabinets have no shelf
- 24" high wall cabinets include one full-depth adjustable shelf

WIDTH	MODEL NUMBER			
	12" HIGH	15" HIGH	18" HIGH	24" HIGH
24"	—	—	—	W2424
27"	—	—	—	W2724
30"	W3012	W3015	W3018	W3024
33"	W3312	—	W3318	W3324
36"	W3612	W3615	W3618	W3624

Wall Bridge Cabinet 15" Deep (W)



- 12" and 18" high wall cabinets have no shelf
- 24" high wall cabinets include one full-depth adjustable shelf

WIDTH	MODEL NUMBER			
	12" HIGH	15" HIGH	18" HIGH	24" HIGH
30"	W301215	—	W301815	W302415
33"	W331215	—	W331815	W332415
36"	W361215	—	W361815	W362415

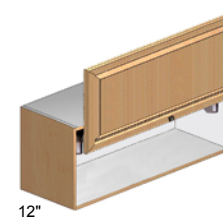
Wall Bridge Cabinet 24" Deep (W)



- 18" high wall cabinets have no shelf
- 24" high wall cabinets include one full-depth adjustable shelf

WIDTH	MODEL NUMBER			
	12" HIGH	15" HIGH	18" HIGH	24" HIGH
33"	—	—	W331824	W332424
36"	—	—	W361824	W362424

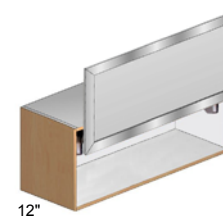
Wall Lift Up Cabinet (WLU)



- Features 6-way adjustable non-Soft Close hinge
- No shelf

WIDTH	MODEL NUMBER			
	12" HIGH	15" HIGH	18" HIGH	24" HIGH
30"	—	—	WLU3018	—
36"	—	—	WLU3618	—

Wall Lift Up Aluminum Cabinet (WLUA)



- Aluminum frame door with frosted glass
- Features standard interior
- Features 6-way adjustable non-Soft Close hinge
- No shelf

WIDTH	MODEL NUMBER			
	12" HIGH	15" HIGH	18" HIGH	24" HIGH
30"	—	—	WLUA3018	—
36"	—	—	WLUA3618	—

WALL CABINETS

WALL CABINETS

Framed Open Wall Cabinet 12" Deep (WOS)



- Frames on wood door styles are 1 1/2" wide and 3/4" thick (to sit flush with cabinet doors)
- Frames on RTF door styles are 2" wide and 3/4" thick (to sit flush with cabinet doors)
- Cabinets feature a matching laminate interior
- 30" and 36" high wall cabinets include two full-depth adjustable shelves
- 42" high wall cabinets include three full-depth adjustable shelves

WIDTH	MODEL NUMBER		
	30" HIGH	36" HIGH	42" HIGH
15"	WOS1530	WOS1536	WOS1542
18"	WOS1830	WOS1836	WOS1842
30"	WOS3030	WOS3036	WOS3042
36"	WOS3630	WOS3636	WOS3642

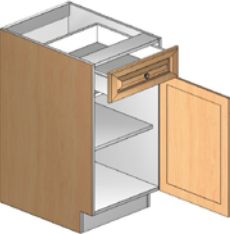
Decorative End Panel for Wall Cabinets (D)



- Must be field installed
- Actual size of end panels 1/8" smaller in both width and height (example: D1230 actual dimensions are 11 7/8" x 29 7/8")

WIDTH	MODEL NUMBER		
	30" HIGH	36" HIGH	42" HIGH
12"	D1230	D1236	D1242
15"	D1530	—	—
18"	D1830	—	—

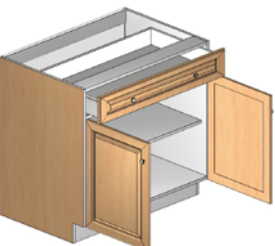
Base Cabinet w/ One Drawer (B)



- Includes one full-depth adjustable shelf

WIDTH	MODEL NUMBER
12"	B12
15"	B15
18"	B18
21"	B21

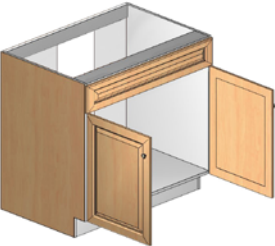
Base Cabinet w/ One Drawer (B)



- Includes one full-depth adjustable shelf

WIDTH	MODEL NUMBER
24"	B24
27"	B27
30"	B30
33"	B33
36"	B36

Sink Base Cabinet/Accessible Sink Base Cabinet (BS/BSH)

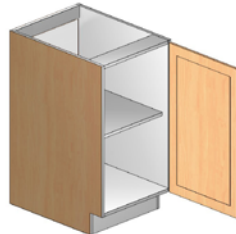


- 6" tall header
- Partial back eliminates need to cut out
- ADA adaptable version (BSH36) has a removable bottom and toe kick

WIDTH	MODEL NUMBER	
	STANDARD	ADA
30"	BS30	—
33"	BS33	—
36"	BS36	BSH36

BASE CABINETS

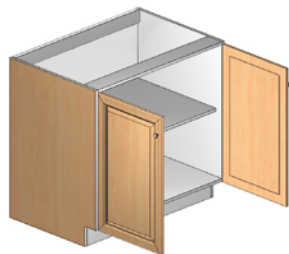
Base Cabinet w/ Full Height Door (BF)



- Includes one full-depth adjustable shelf

WIDTH	MODEL NUMBER
9"	BF9
12"	BF12
15"	BF15
18"	BF18
21"	BF21

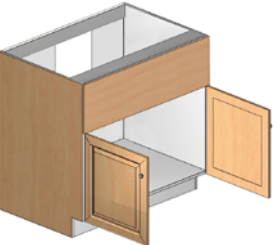
Base Cabinet w/ Two Full Height Doors (BF)



- Includes one full-depth adjustable shelf

WIDTH	MODEL NUMBER
24"	BF24
27"	BF27
30"	BF30
33"	BF33
36"	BF36

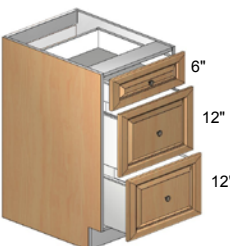
Apron Sink Base (BSA)



- 12" trimmable apron front can be trimmed to any dimension or fully removed
- Partial back eliminates need to cut out
- Accommodates most apron sinks and professional cooktops

WIDTH	MODEL NUMBER
36"	BSA36

Base Cabinet w/ 3 Drawers (B3D)



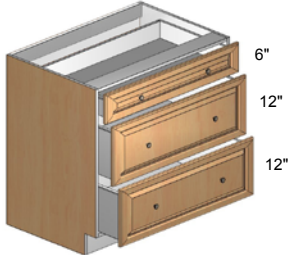
- All drawers feature standard under-mount Soft Close glides

WIDTH	MODEL NUMBER
12"	B3D12
15"	B3D15
18"	B3D18
21"	B3D21
24"	B3D24

WALL CABINETS

BASE CABINETS

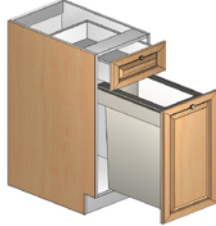
Base Pot & Pan Cabinet w/ Three Drawers (B3PP)



- Top drawer features standard under-mount Soft Close glides
- Large drawers feature heavy-duty side-mounted Soft Close glides

WIDTH	MODEL NUMBER
30"	B3PP30
33"	B3PP33
36"	B3PP36

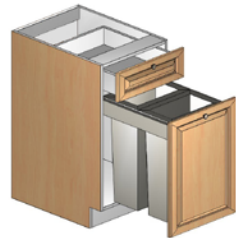
Base Cabinet w/ Single Waste Bin (BWS)



- Top drawer features standard under-mount Soft Close glides
- Pull-out unit features heavy-duty side-mounted Soft Close glides
- Includes one 12-gallon waste bin

WIDTH	MODEL NUMBER
15"	BWS15

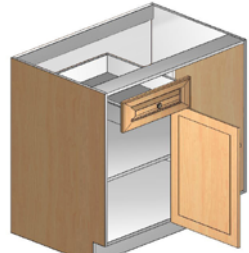
Base Cabinet w/ Dual Waste Bins (BWD)



- Top drawer features standard under-mount Soft Close glides
- Pull-out unit features heavy-duty side-mounted Soft Close glides
- Includes two 12-gallon waste bins

WIDTH	MODEL NUMBER
18"	BWD18

Base Blind Corner Cabinet w/ Drawer (BB)

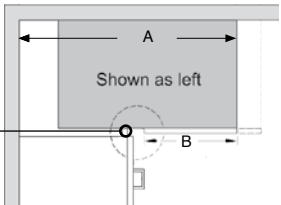


Shown as right

A WALL SPACE	ACTUAL CABINET WIDTH	B DOOR AND DRAWER WIDTH	MINIMUM PULL*	MAXIMUM PULL	MODEL NUMBER
39"	30"	12"	37"	41"	BB39L/BB39R
42"	33"	15"	40"	44"	BB42L/BB42R

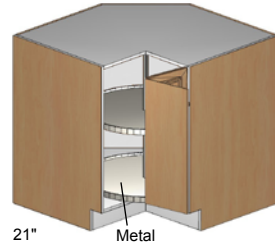
*Hardware clearance for the blind cabinet has been calculated into the minimum pull

For proper hardware clearance on adjacent cabinet, a 3" filler is recommended.



- Hinges mount to blind panel
- Includes one full-depth adjustable shelf
- Hinging specification also indicates the position of the blind side (i.e., left hinge means blind panel is on the left side)
- Drawer features standard under-mount Soft Close glides
- Minimum 1" filler required - order AF330 separately

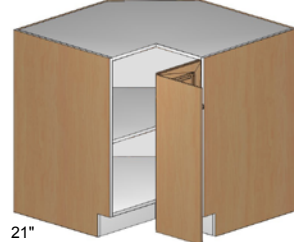
Base Lazy Susan Corner Cabinet (BLS)



- Includes two independently spinning steel wire baskets
- 165° side hinges and knuckle hinges in center
- Not available with Soft Close hinges
- 3" gap at back
- Requires minimum of 32" to fit through doorway
- See Lazy Susan installation details below for more information

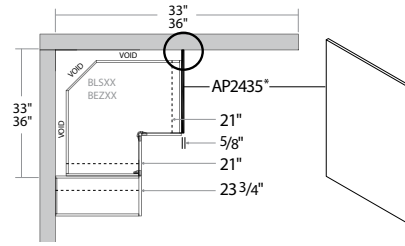
WIDTH	MODEL NUMBER
36"	BLS36

Base EZ Reach Corner Cabinet (BEZ)



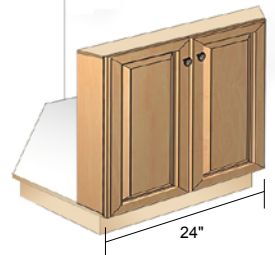
- Includes one full-depth adjustable shelf
- 165° side hinges and knuckle hinges in center
- Not available with Soft Close hinges
- 3" gap at back
- Requires minimum of 32" to fit through doorway

WIDTH	MODEL NUMBER
33"	BEZ33
36"	BEZ36



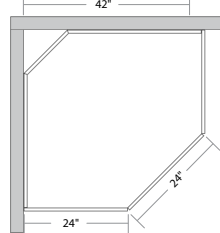
*Note: If either side of the BEZ/BLS is exposed, then order AP2435 side panel to cover gap

Corner Sink Base Kit (BSCK)

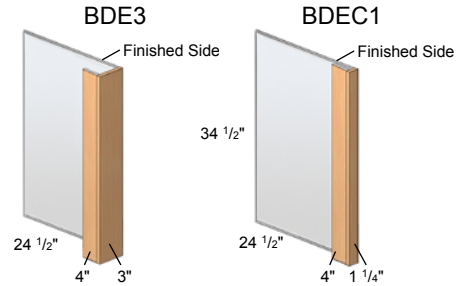


- Requires adjacent cabinet, end panel, dishwasher return or base column
- Requires 42" x 42" space
- Cabinets include two 12" x 30" doors
- Floor has parts sub-assembled with pocket screws for quick installation
- Back corner clipped for out of square corners
- Doors feature standard Soft Close hinges
- Cleat required to support countertop (not included)

WIDTH	MODEL NUMBER
24"	BSCK42



Dishwasher Return (BDE/BDEC)



- Side panel is same depth as standard cabinet, front fascia flush with doors
- Finished on one side only
- Order BDE3 if end requires clearance for an electrical outlet

WIDTH	MODEL NUMBER
3"	BDE3
1 1/4"	BDEC1

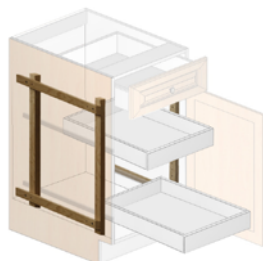
Base Column (BCB)



- Side panels are same depth as standard cabinet, front fascia flush with doors
- Finished ends standard
- Both sides are finished

WIDTH	MODEL NUMBER
3"	BCB3

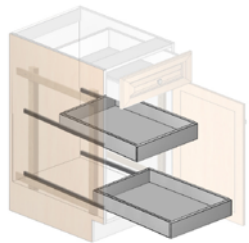
Roll-Outs Standard Kit (AROSTD) - Required for ARO's



- Kit includes: two side mounts, screws and installation instructions
- Two kits required for tall cabinets
- Holes are pre-drilled for easy roll-out installation
- **Required for AROs**

MODEL NUMBER
AROSTD

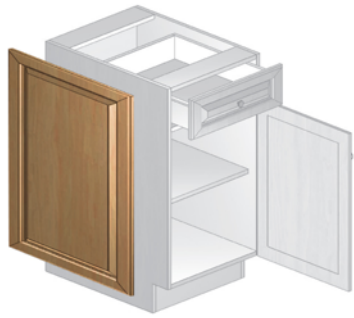
Roll-Outs (Loose) for Cabinets (ARO)



- Must be field installed
- Must order AROSTD (above) for installation
- Hardwood, dovetail drawer; Soft Close glide

SINGLE DOOR WIDTH	MODEL NUMBER	DOUBLE DOOR WIDTH	MODEL NUMBER
12"	ARO12	24"	ARO24
15"	ARO15	27"	ARO27
18"	ARO18	30"	ARO30
21"	ARO21	33"	ARO33
—	—	36"	ARO36

Decorative End Panels for Base Cabinets (D)



- Must be field installed
- Can be fastened to the side of any standard size cabinet
- Actual size of end panels 1/8" smaller in both width and height (example: D2430 actual dimensions are 23 7/8" x 29 7/8")

WIDTH	MODEL NUMBER
24"	D2430

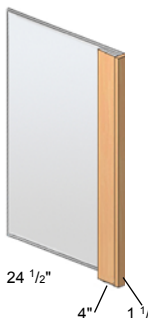
Tall Pantry 24" Deep (T)



- 84" and 90" high tall cabinets include one full-depth fixed shelf and three full-depth adjustable shelves
- 96" high tall cabinets include one full-depth fixed shelf and four full-depth adjustable shelves
- 18" wide tall cabinets have two doors
- 24" wide tall cabinets have four doors

WIDTH	MODEL NUMBER		
	84" HIGH	90" HIGH	96" HIGH
18"	T1884	T1890	T1896
24"	T2484	T2490	T2496

Tall Built-In Refrigerator Panel (TREC)



- Side panel is same depth as standard cabinet, fascia flush with doors
- Finished on one side only
- Return panel is 5/8" thick

WIDTH	DEPTH	HEIGHT	MODEL NUMBER
1 1/4"	24 1/2"	96"	TREC196

Tall Panel (AP)



- Both sides are finished

WIDTH	DEPTH	HEIGHT	MODEL NUMBER
5/8"	23 3/4"	96"	AP2496B

Oven Cabinet - Double (OVD)

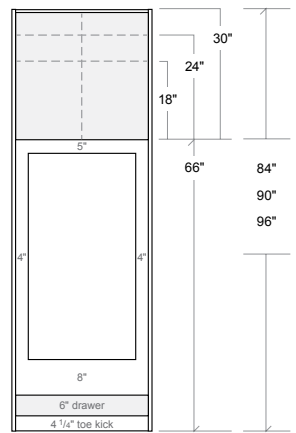
Use for standard double ovens or split combo



- Divider for split ovens included
- Drawer front is 6" tall, interior clearance is 4 1/4"
- 90" and 96" high oven cabinets include one full-depth adjustable shelf in upper section
- Includes plywood oven support panel

WIDTH	MODEL NUMBER		
	84" HIGH	90" HIGH	96" HIGH
33"	OVD3384	OVD3390	OVD3396

Double (OVD) Double Oven Cabinet



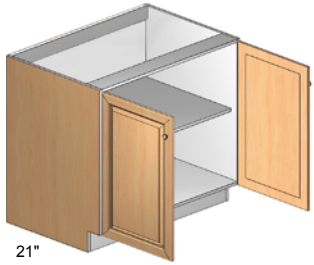
CUTOUT WIDTH	
MINIMUM	MAXIMUM
24 7/8"	29 7/8"

CUTOUT HEIGHT	
MINIMUM	MAXIMUM
42 3/4"	52 3/4"

BASE CABINETS

TALL CABINETS

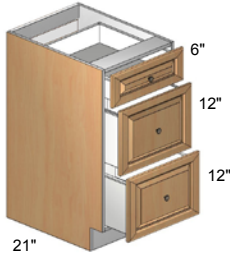
Vanity Tall Base Cabinet w/ Two Full Doors (VTF)



- Includes one full-depth adjustable shelf
- 34 1/2" high

WIDTH	MODEL NUMBER
24"	VTF24
27"	VTF27
30"	VTF30
33"	VTF33
36"	VTF36

Vanity Tall Base Cabinet w/ Three Drawers (VT3D)

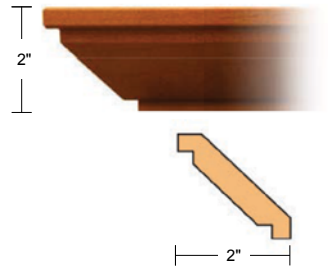


- All drawers feature standard under-mount Soft Close glides
- 34 1/2" high

WIDTH	MODEL NUMBER
12"	VT3D12
15"	VT3D15
18"	VT3D18
21"	VT3D21
24"	VT3D24

MOLDING

Shaker Crown Molding



MODEL NUMBER
AMC4

- 96" length

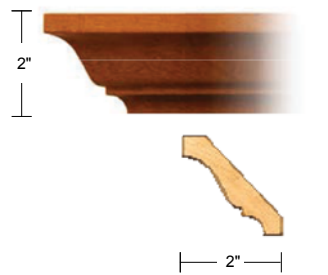
Batten Molding



MODEL NUMBER
AMB

- 96" length
- 1/4" thickness

Traditional Crown Molding



MODEL NUMBER
AMC5

- 96" length
- Available in White and Heron Gray finishes only

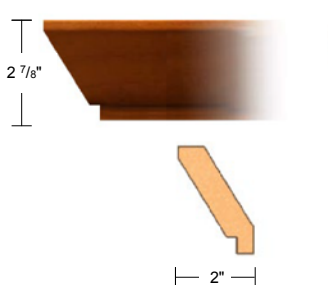
Outside Corner Molding



MODEL NUMBER
AMOC

- 96" length
- Not available in Glacier, Thunder and Driftwood finishes

Transitional Crown Molding



MODEL NUMBER
AMC10

- 96" length

Base Shoe Molding



MODEL NUMBER
AMSH

- 96" length
- 3/4" thickness

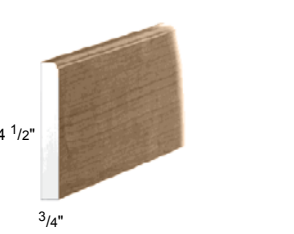
Economy Light Rail Molding



MODEL NUMBER
AMLR1

- 96" length
- 3/4" thickness

Base Board Molding



MODEL NUMBER
AMBB

- 96" length
- 3/4" thickness

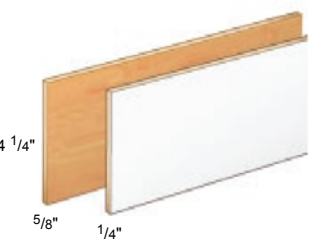
Scribe Molding



MODEL NUMBER
AMS

- 96" length
- 1/4" thickness

Toe Kick

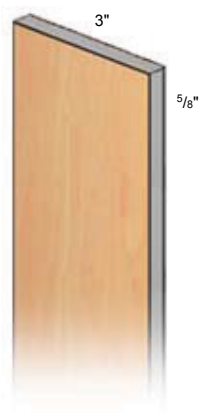


MODEL NUMBER
ATK

- 96" length
- Glacier, Thunder, Driftwood and Storm Gray finishes feature 5/8" thick toe kick
- White, Heron Gray and Spice finishes feature 1/4" thick toe kick

FILLERS

Furniture Board Filler (AF)



- Finished on one side only
- AF396 is edgebanded on one long edge

HEIGHT	MODEL NUMBER	
	3" WIDTH	6" WIDTH
30 1/4"	AF330	—
36"	AF336	—
42"	AF342	—
96"	AF396	AF696

PANELS

Panel Ends (AP)

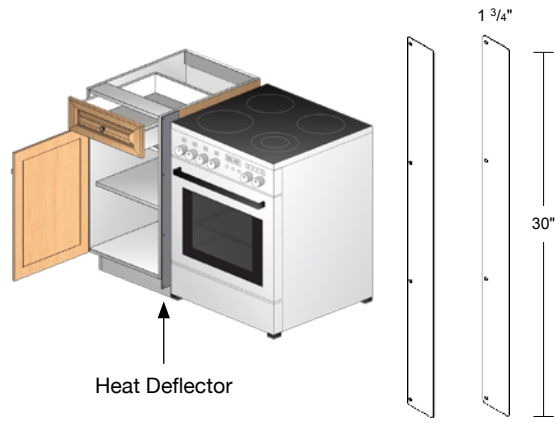


- Grain runs length of panel
- AP2435 is edgebanded on one long edge
- AP4835 is edgebanded on both shorter (35") edges
- AP2496B is edgebanded on one long edge

USE	FINISHED SIDES	HEIGHT	WIDTH	MODEL NUMBER
Base/Vanity	1	35"	23 3/4"	AP2435
Tall	2	96"	23 3/4"	AP2496B
Island Back	1	35"	48"	AP4835

HEAT DEFLECTOR

Steel Heat Deflector Kit (AKHD)

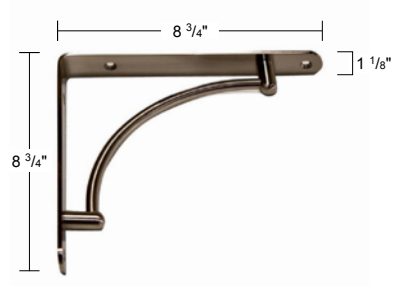


- Recommended for RTF styles
- Includes two 1mm thick steel heat deflectors and eight installation screws

MODEL NUMBER
AKHD

METAL CORBEL

Standard (ACBM)



- Use with overhang up to 12"

FINISH	MODEL NUMBER
Brushed Nickel	ACBM9

HARDWARE

Standard (AHK1)



FINISH	MODEL NUMBER
Brushed Nickel	AHK1-BN

Gallery (AHP13)



FINISH	WIDTH	CENTER	MODEL NUMBER
Brushed Nickel	6"	3"	AHP13.5-BN
Brushed Nickel	12"	9"	AHP13.12-BN

Square (AHP14)



FINISH	WIDTH	CENTER	MODEL NUMBER
Brushed Nickel	5 3/4"	5"	AHP14-BN

TOUCH UP



- Replace "xx" with finish code:
- DW** = Driftwood
 - GL** = Glacier
 - GR** = Heron Gray
 - SP** = Spice
 - ST** = Storm Gray
 - TH** = Thunder
 - WH** = White

DESCRIPTION	MODEL NUMBER
Fill Stick	FS230-xx
Touch Up Pen	FS281-xx

ACCESSORIES

ACCESSORIES

About Us

Vendor Information

Special Order Vendor Number: 60008081

Address: Post Office Box 1980, Winchester, VA 22604

Customer Care Email Address: HBDesignerSeries_CC@woodmark.com

Customer Care Phone Number: (800) 230-5661

Customer Care Service Hours: Monday through Friday, 8:00 am to 7:00 pm (EST)

2020 Catalog

HBDSXP

HBDSXP2

Website

Visit the Hampton Bay Designer Series website at www.hamptonbaykitchens.com for more product information and design ideas.

Minimum Order

A five cabinet minimum applies to all Hampton Bay Designer Series orders; accessories are not included in the five cabinet minimum.

Order Processing and Lead-Time

Special Order Hampton Bay Designer Series cabinet orders ship in two weeks. Some orders and store locations, including those outside the Continental U.S., may require more delivery time.

- Orders must be submitted via EDI.
- Orders received before 3:00 pm (EST) Mon-Fri will be accepted on the same business day.
- Orders received after 3:00 pm (EST) Mon-Fri will be accepted on the next business day.
- Orders received on Saturday or Sunday will be accepted on the next business day.

RTV Procedures

For any questions, please contact Customer Care at (800) 230-5661.

- If product was mis-shipped or an order entry error occurred, contact Customer Care for disposition.

Damage and Shortage

- Reorder products or parts for consumer without delay. Replacements will be expedited as quickly as possible.
- If damage occurred during transit, request the store's receiving department to file a freight claim.
- All shortages must be reported to carrier within 30 days.

Manufacturing or Product Defect

- If the product has a manufacturing product defect, process RTV for credit.

Cancellations or Customer Return Requests: CANCELLATIONS OR CHANGES TO ORDERS ARE NOT ALLOWED AFTER 48 HOURS FROM RECEIPT OF THE STORE PURCHASE ORDER.

Care & Cleaning

- For normal spills, a damp cloth is sufficient. Remember to dry the surface immediately.
- RTF doors can be cleaned with most general purpose household kitchen or bath cleaners.
- Wood doors can be cleaned with most general purpose household cleaners and polished with most furniture care products, not containing wax, petroleum solvents or silicones.
- Do not use caustic agents and/or abrasive scrubbers or oven cleaners.
- Nicks and dings can be repaired with touch-up kits.
- For stains that persist, flakes of Ivory soap diluted in warm water may be used. Remember to dry the surface immediately.
- Cabinets can be cleaned with a damp sponge, a cloth using soapy water, or most general purpose household cleaners. Do not use any type of abrasive cleaner or scrubbers.
- Do not let liquids stay on the surface for a long period of time. The surface is water resistant, not waterproof.

Disclaimers

Wood: Wood species in all finishes will exhibit color changes when exposed to different types of light and environments over time. Such color changes, as well as graining differences, mineral streaks and color variations are expected in Hampton Bay Designer Series cabinets and are not defects.

Maple: Maple wood inherently has a characteristic known as "birdseye" or "fiddleback" pattern in the wood. When finished, it can have the appearance of a varied sheen, a splotchy appearance, or satiny look. This is the beauty of real maple and not a defect. In most cases, it takes on a very pleasant look. Mineral streaks are common and may appear darker when stained.

Preventing Heat and/or Humidity Damage: Various cooking ovens, ranges, cook tops, cooking pots, toasters and other small appliances produce high heat and/or humidity. It is very important to make sure these products are positioned so rising heat is not trapped or confined, otherwise, you risk damage to cabinets or moldings that are not covered under the warranty. In addition, if higher temperature settings are used for extended periods of time, the radiant heat may be excessive and the doors and drawer fronts should be shielded or removed. This is particularly important on RTF doors, which cannot be exposed to extended temperatures beyond 160°F without risking permanent damage. We recommend the use of a heat deflector (AKHD - page 18) for RTF kitchen installations.

WARNING: This product can expose you to chemicals including formaldehyde, which is known to the State of California to cause cancer, and methanol, which is known to the State of California to cause birth defects or other reproductive harm. For more information, go to www.P65warnings.ca.gov

Limited Lifetime Warranty

This warranty covers defects in materials and workmanship in your Hampton Bay Designer Series Kitchen products under normal home use. This warranty is offered only to the original residential consumer purchaser ("the Consumer") and may not be transferred.

What This Warranty Covers: American Woodmark Corporation ("AWC"), the manufacturer of these Hampton Bay Designer Series products, warrants its parts and products to be free of defects in materials and workmanship from the original date of purchase under normal home use. This warranty is offered to the original residential consumer purchaser only and may not be transferred.

How Long The Warranty Lasts: The coverage of this warranty lasts for the lifetime of the original purchaser, so long as he or she owns the home in which the product was first installed.

Warrantor:

American Woodmark Corporation
561 Shady Elm Road
Winchester, VA 22602
(800) 230-5661
HamptonBayKitchens.com

What American Woodmark Will Do Under The Warranty: During the warranty period, AWC, at its option, will repair or replace any part or product that proves to have substantial defects in materials or workmanship, or AWC will provide an equivalent replacement product, at no cost to the Consumer. AWC reserves the right to change specifications in design and materials without notice and with no obligation to retrofit products we previously manufactured.

Duties of the Consumer: If you purchased Hampton Bay Designer Series cabinetry and need a replacement part or would like to file a warranty claim, IMMEDIATELY NOTIFY AWC BY E-MAIL (HBDesignerseries_CC@woodmark.com) OR TELEPHONE (800-230-5661) OF THE ISSUE. You must provide a copy of the original sales receipt from your purchase.

Hand Carving, Wood, Aging And Printing Limitations: Because of the varying natural characteristics of wood and the effects of aging, product shown in displays and/or printed materials will not be an exact match to new cabinetry you will receive. Depending on the wood characteristics, the age of a sample and the environment of the showroom, samples will show some degree of variation from new product. In addition, you should not expect all doors, drawer fronts, trim or molding to match exactly in either finish or grain. Variation in wood is normal and unavoidable. In addition, it is not possible to match our colors exactly in printed materials. Therefore, you should view the actual samples when making your color selection. Slight variation in size and design is also characteristic of individually hand-carved items. This variation can occur from carving to carving, which only adds to their uniqueness and beauty.

Limitations and Exclusions: This warranty does not cover defects or damage which result from commercial use, improper transportation, improper installation, use of unauthorized parts, mishandling, misuse, abuse, neglect, abnormal use, improper maintenance, non-AWC repairs, accidents, impact, or acts of God, such as hurricanes, fire, earthquakes or floods, normal wear and tear, alterations, environmental conditions, humidity absorption, or mold. This warranty, and any applicable implied warranties, does not cover incidental or consequential damages arising from any defects in the product, such as labor charges for installation or removal of the product or any associated products. In addition, variations in hand carved items, wood grain, finish color, aging or other natural wood and stain characteristics are not considered defects and are not covered by this warranty.

Disclaimers and Rights: AWC disclaims any implied warranty of merchantability, and there are no express warranties other than those set forth herein. ANY WARRANTY IMPLIED BY STATE LAW (WHETHER OF MERCHANTABILITY OR FITNESS FOR A PARTICULAR USE OR OTHERWISE) SHALL BE EFFECTIVE FOR ANY PRODUCT ONLY FOR THE DURATION OF THE APPLICABLE LIMITED WARRANTY PERIOD LISTED ABOVE. SOME STATES DO NOT ALLOW THE EXCLUSION OR LIMITATION OF INCIDENTAL OR CONSEQUENTIAL DAMAGES, SO THE ABOVE LIMITATION OR EXCLUSION MAY NOT APPLY TO YOU. THIS WARRANTY GIVES YOU SPECIFIC LEGAL RIGHTS, AND YOU MAY ALSO HAVE OTHER RIGHTS THAT VARY FROM STATE TO STATE



HAMPTON BAY
DESIGNER SERIES

7-21

(800) 230-5661
www.hamptonbaykitchens.com
HBDesignerSeries_CC@Woodmark.com